

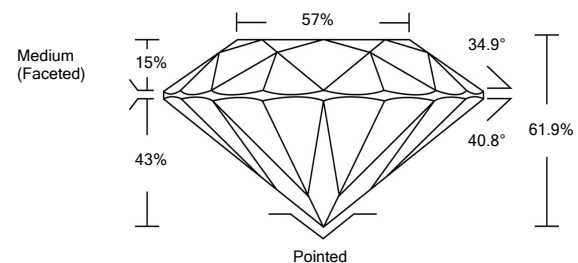


ELECTRONIC COPY

LABORATORY GROWN DIAMOND REPORT

LG524226018

PROPORTIONS



GRADING SCALES

Table showing Color Grading Scale (CL to LT) and Clarity (10x) Grading Scale (FL to I).

April 27, 2022
IGI Report Number: LG524226018
Description: LABORATORY GROWN DIAMOND
Shape and Cutting Style: ROUND BRILLIANT
Measurements: 7.08 - 7.13 X 4.39 MM

GRADING RESULTS

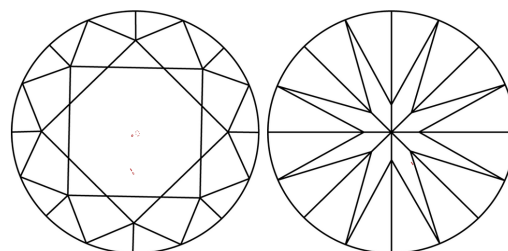
Carat Weight: 1.37 CARAT
Color Grade: D
Clarity Grade: VS 1
Cut Grade: IDEAL

ADDITIONAL GRADING INFORMATION

Polish: EXCELLENT
Symmetry: EXCELLENT
Fluorescence: NONE
Inscription(s): LABGROWN IGI LG524226018

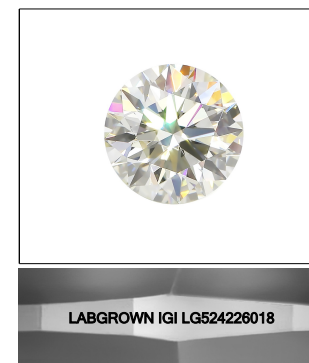
Comments: As Grown - No indication of post-growth treatment. This Laboratory Grown Diamond was created by High Pressure High Temperature (HPHT) growth process. Type II

CLARITY CHARACTERISTICS



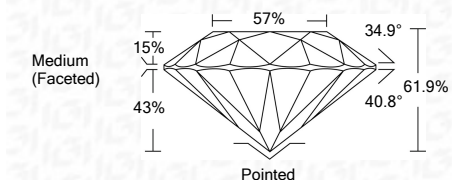
KEY TO SYMBOLS

Red symbols indicate internal characteristics. Green symbols indicate external characteristics.



LASERSCRIBE SM Sample Image Used

April 27, 2022
IGI Report Number: LG524226018
Description: LABORATORY GROWN DIAMOND
Shape and Cutting Style: ROUND BRILLIANT
Measurements: 7.08 - 7.13 X 4.39 MM
GRADING RESULTS
Carat Weight: 1.37 CARAT
Color Grade: D
Clarity Grade: VS 1
Cut Grade: IDEAL



ADDITIONAL GRADING INFORMATION

Polish: EXCELLENT
Symmetry: EXCELLENT
Fluorescence: NONE
Inscription(s): LABGROWN IGI LG524226018
Comments: As Grown - No indication of post-growth treatment. This Laboratory Grown Diamond was created by High Pressure High Temperature (HPHT) growth process. Type II



IGI



Summary table of report details including Report No, Description, Measurements, Grading Results, and Additional Information.