



**INTERNATIONAL  
GEMOLOGICAL  
INSTITUTE**

**ELECTRONIC COPY**

**LABORATORY GROWN  
DIAMOND REPORT**

**IGI LABORATORY GROWN  
DIAMOND ID REPORT**

April 27, 2022  
IGI Report Number **LG524232334**  
**PEAR BRILLIANT**  
**6.92 X 4.21 X 2.56 MM**  
Carat Weight 0.45 CARAT  
Color Grade E  
Clarity Grade VS 2  
Polish EXCELLENT  
Symmetry VERY GOOD  
Fluorescence NONE  
Inscription(s) LABGROWN IGI  
LG524232334

**LABORATORY GROWN DIAMOND REPORT**

**IGI LABORATORY GROWN DIAMOND IDENTIFICATION REPORT**

April 27, 2022  
IGI Report Number LG524232334  
Description LABORATORY GROWN DIAMOND  
Shape and Cutting Style PEAR BRILLIANT  
Measurements 6.92 X 4.21 X 2.56 MM

**GRADING RESULTS**

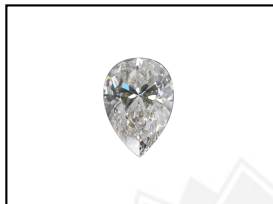
Carat Weight 0.45 CARAT  
Color Grade E  
Clarity Grade VS 2

**ADDITIONAL GRADING INFORMATION**

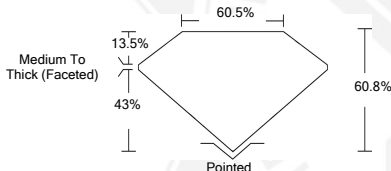
Polish EXCELLENT  
Symmetry VERY GOOD  
Fluorescence NONE  
Inscription(s) LABGROWN IGI LG524232334

Comments: This Laboratory Grown Diamond was created by Chemical Vapor Deposition (CVD) growth process and may include post-growth treatment.  
Type IIa

**LG524232334**



**LASERSCRIBE<sup>SM</sup>**  
Sample Images Used



Comments: This Laboratory Grown Diamond was created by Chemical Vapor Deposition (CVD) growth process and may include post-growth treatment.  
Type IIa

**IGI LABORATORY GROWN  
DIAMOND ID REPORT**

April 27, 2022  
IGI Report Number **LG524232334**  
**PEAR BRILLIANT**  
**6.92 X 4.21 X 2.56 MM**  
Carat Weight 0.45 CARAT  
Color Grade E  
Clarity Grade VS 2  
Polish EXCELLENT  
Symmetry VERY GOOD  
Fluorescence NONE  
Inscription(s) LABGROWN IGI  
LG524232334

Comments: This Laboratory Grown Diamond was created by Chemical Vapor Deposition (CVD) growth process and may include post-growth treatment.  
Type IIa

THIS DOCUMENT WAS PRODUCED WITH THE FOLLOWING SECURITY MEASURES: SPECIAL DOCUMENT PAPER, INK SCREENS, WATERMARK, BACKGROUND DESIGN, HOLOGRAM AND OTHER SECURITY FEATURES NOT LISTED AND DO EXCEEDED DOCUMENT SECURITY INDUSTRY GUIDELINES.

For Terms & Conditions and to verify this report, please visit [www.igi.org](http://www.igi.org)