



**INTERNATIONAL
GEMOLOGICAL
INSTITUTE**

ELECTRONIC COPY

**LABORATORY GROWN
DIAMOND REPORT**

**IGI LABORATORY GROWN
DIAMOND ID REPORT**

May 9, 2022
IGI Report Number **LG524233115**
PEAR BRILLIANT
6.51 X 4.28 X 2.62 MM
Carat Weight 0.41 CARAT
Color Grade H
Clarity Grade VVS 1
Polish EXCELLENT
Symmetry EXCELLENT
Fluorescence NONE
Inscription(s) LABGROWN IGI
LG524233115

LABORATORY GROWN DIAMOND REPORT

IGI LABORATORY GROWN DIAMOND IDENTIFICATION REPORT

May 9, 2022
IGI Report Number LG524233115
Description LABORATORY GROWN DIAMOND
Shape and Cutting Style PEAR BRILLIANT
Measurements 6.51 X 4.28 X 2.62 MM

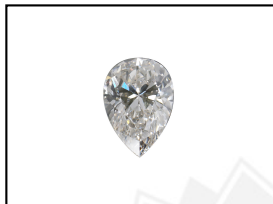
GRADING RESULTS

Carat Weight 0.41 CARAT
Color Grade H
Clarity Grade VVS 1

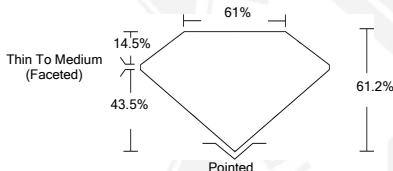
ADDITIONAL GRADING INFORMATION

Polish EXCELLENT
Symmetry EXCELLENT
Fluorescence NONE
Inscription(s) LABGROWN IGI LG524233115

Comments: As Grown - No indication of post-growth treatment.
This Laboratory Grown Diamond was created by High Pressure High
Temperature (HPHT) growth process.
Type II
Faint Blue



LASERSCRIBESM
Sample Images Used



Comments: As Grown - No indication of post-growth treatment.
This Laboratory Grown Diamond was created by High Pressure High
Temperature (HPHT) growth process.
Type II
Faint Blue

**IGI LABORATORY GROWN
DIAMOND ID REPORT**

May 9, 2022
IGI Report Number **LG524233115**
PEAR BRILLIANT
6.51 X 4.28 X 2.62 MM
Carat Weight 0.41 CARAT
Color Grade H
Clarity Grade VVS 1
Polish EXCELLENT
Symmetry EXCELLENT
Fluorescence NONE
Inscription(s) LABGROWN IGI
LG524233115

Comments: As Grown - No indication of post-growth treatment.
This Laboratory Grown Diamond was created by High Pressure High
Temperature (HPHT) growth process.
Type II
Faint Blue

THIS DOCUMENT WAS PRODUCED WITH THE FOLLOWING SECURITY MEASURES: SPECIAL DOCUMENT PAPER, INK SCREENS, WATERMARK, BACKGROUND DESIGN, HOLOGRAM AND OTHER SECURITY FEATURES NOT LISTED AND DO EXCEEDED DOCUMENT SECURITY INDUSTRY GUIDELINES.

For Terms & Conditions and to verify this report, please visit www.igi.org