

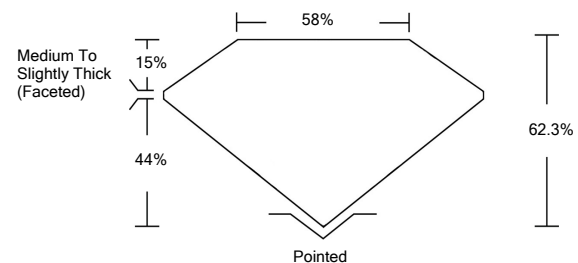


ELECTRONIC COPY

LABORATORY GROWN DIAMOND REPORT

LG524241874

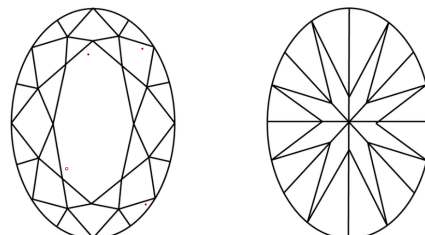
PROPORTIONS



GRADING SCALES

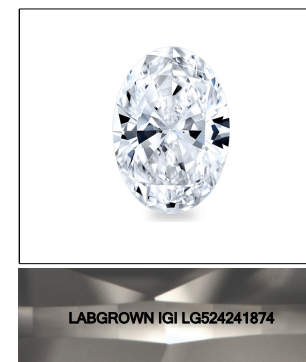
COLOR GRADING SCALE	CL	NC	FT	VL	LT	
	COLORLESS D-F	NEAR COLORLESS G-J	FAINT K-M	VERY LIGHT N-R	LIGHT S-Z	
CLARITY (10x) GRADING SCALE	FL	IF	VVS	VS	SI	I
	FLAWLESS INTERNALLY FLAWLESS	VERY VERY SLIGHTLY INCLUDED	VERY SLIGHTLY INCLUDED	SLIGHTLY INCLUDED	INCLUDED	

CLARITY CHARACTERISTICS



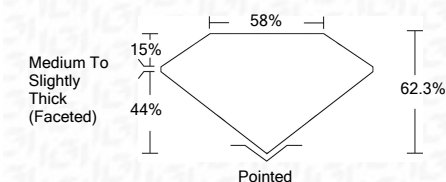
KEY TO SYMBOLS

Red symbols indicate internal characteristics.
Green symbols indicate external characteristics.



LASERSCRIBESM
Sample Image Used

April 18, 2022	IGI Report Number	LG524241874
Description	LABORATORY GROWN DIAMOND	
Shape and Cutting Style	OVAL BRILLIANT	
Measurements	10.88 X 7.49 X 4.67 MM	
GRADING RESULTS	Carat Weight	2.37 CARATS
	Color Grade	G
	Clarity Grade	VS 1



ADDITIONAL GRADING INFORMATION	
Polish	EXCELLENT
Symmetry	EXCELLENT
Fluorescence	NONE
Inscription(s)	LABGROWN IGI LG524241874

Comments: This Laboratory Grown Diamond was created by Chemical Vapor Deposition (CVD) growth process and may include post-growth treatment.
Type IIa

April 18, 2022	IGI Report Number	LG524241874
Description	LABORATORY GROWN DIAMOND	
Shape and Cutting Style	OVAL BRILLIANT	
Measurements	10.88 X 7.49 X 4.67 MM	
GRADING RESULTS	Carat Weight	2.37 CARATS
	Color Grade	G
	Clarity Grade	VS 1
ADDITIONAL GRADING INFORMATION		
Polish	EXCELLENT	
Symmetry	EXCELLENT	
Fluorescence	NONE	
Inscription(s)	LABGROWN IGI LG524241874	

Comments: This Laboratory Grown Diamond was created by Chemical Vapor Deposition (CVD) growth process and may include post-growth treatment.
Type IIa



IGI

April 18, 2022	IGI Report No. LG524241874	OVAL BRILLIANT	10.88 X 7.49 X 4.67 MM	2.37 CARATS	G	VS 1	62.3%	58%	Medium To Slightly Thick (Faceted)	Pointed	EXCELLENT	EXCELLENT	NONE	LABGROWN IGI LG524241874	
	Color Grade	Clarity Grade	Depth	Table	Girdle	Culet	Polish	Symmetry	Fluorescence	Inscription(s)	Comments:	This Laboratory Grown Diamond was created by Chemical Vapor Deposition (CVD) growth process and may include post-growth treatment. Type IIa			