

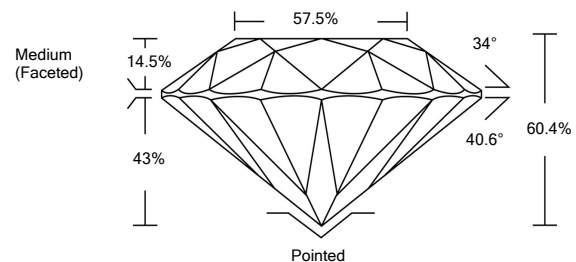


ELECTRONIC COPY

LABORATORY GROWN DIAMOND REPORT

LG524241929

PROPORTIONS



GRADING SCALES

COLOR GRADING SCALE	CL	NC	FT	VL	LT	
	COLORLESS D-F	NEAR COLORLESS G-J	FAINT K-M	VERY LIGHT N-R	LIGHT S-Z	
CLARITY (10x) GRADING SCALE	FL	IF	VVS	VS	SI	I
	FLAWLESS INTERNALLY FLAWLESS	VERY VERY SLIGHTLY INCLUDED	VERY SLIGHTLY INCLUDED	SLIGHTLY INCLUDED	INCLUDED	

April 23, 2022

IGI Report Number

LG524241929

Description

**LABORATORY GROWN
DIAMOND**

Shape and Cutting Style

ROUND BRILLIANT

Measurements

8.23 - 8.26 X 4.98 MM

GRADING RESULTS

Carat Weight

2.07 CARATS

Color Grade

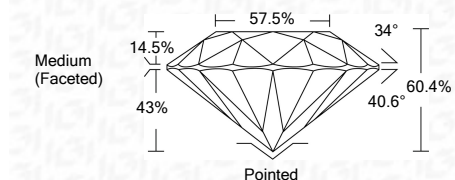
D

Clarity Grade

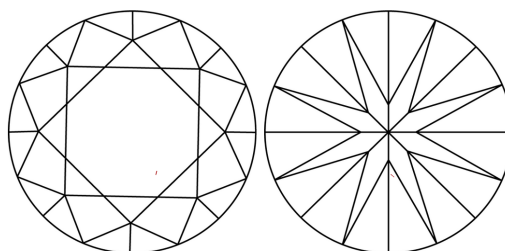
VS 1

Cut Grade

IDEAL

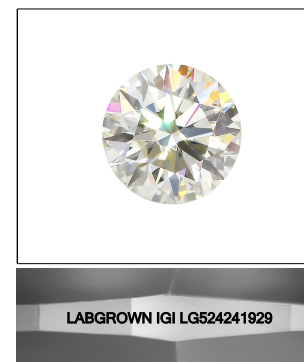
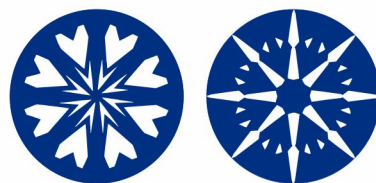


CLARITY CHARACTERISTICS



KEY TO SYMBOLS

Red symbols indicate internal characteristics.
Green symbols indicate external characteristics.



LASERSCRIBESM

Sample Image Used

ADDITIONAL GRADING INFORMATION

Polish

EXCELLENT

Symmetry

EXCELLENT

Fluorescence

NONE

Inscription(s)

LABGROWN IGI LG524241929

Comments: HEARTS & ARROWS

As Grown - No indication of post-growth treatment.
This Laboratory Grown Diamond was created by High Pressure High Temperature (HPHT) growth process.
Type II



IGI



April 23, 2022	IGI Report No. LG524241929	2.07 CARATS	D
ROUND BRILLIANT	8.23 - 8.26 X 4.98 MM	VS 1	IDEAL
Carat Weight	Color Grade	Clarity Grade	Depth
8.23 - 8.26 X 4.98 MM	D	VS 1	60.4%
Color Grade	Clarity Grade	Cut Grade	Table
D	VS 1	IDEAL	57.5%
Clarity Grade	Depth	Girdle	Medium (Faceted)
VS 1	60.4%		
Culet	Polish	Symmetry	Fluorescence
Pointed	EXCELLENT	EXCELLENT	NONE
Inscriptions(s)	Inscriptions(s)		
LABGROWN IGI LG524241929			

Comments: HEARTS & ARROWS
As Grown - No indication of post-growth treatment.
This Laboratory Grown Diamond was created by High Pressure High Temperature (HPHT) growth process.
Type II