



ELECTRONIC COPY

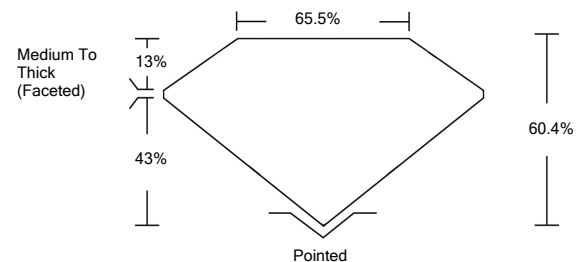
LABORATORY GROWN DIAMOND REPORT

LG524248718

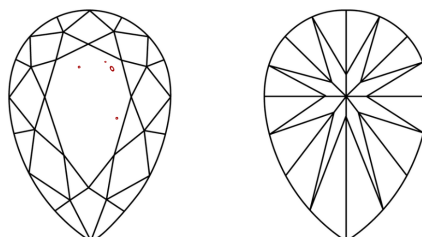
GRADING SCALES

COLOR GRADING SCALE	CL	NC	FT	VLT	LT	
	COLORLESS D-F	NEAR COLORLESS G-J	FAINT K-M	VERY LIGHT N-R	LIGHT S-Z	
CLARITY (10x) GRADING SCALE	FL	IF	VVS	VS	SI	I
	FLAWLESS INTERNALLY FLAWLESS	VERY VERY SLIGHTLY INCLUDED	VERY SLIGHTLY INCLUDED	SLIGHTLY INCLUDED	INCLUDED	

PROPORTIONS

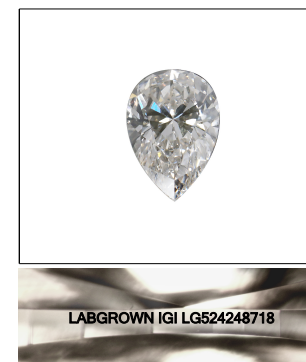


CLARITY CHARACTERISTICS



KEY TO SYMBOLS

Red symbols indicate internal characteristics.
Green symbols indicate external characteristics.



LASERSCRIBESM

Sample Image Used

May 2, 2022

IGI Report Number **LG524248718**

Description **LABORATORY GROWN DIAMOND**

Shape and Cutting Style **PEAR BRILLIANT**

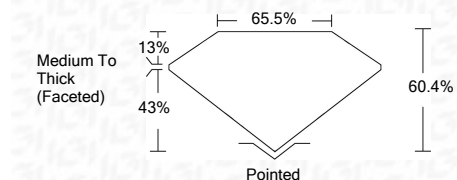
Measurements **9.45 X 6.42 X 3.88 MM**

GRADING RESULTS

Carat Weight **1.44 CARAT**

Color Grade **G**

Clarity Grade **VS 2**



ADDITIONAL GRADING INFORMATION

Polish **EXCELLENT**

Symmetry **EXCELLENT**

Fluorescence **NONE**

Inscription(s) **LABGROWN IGI LG524248718**

Comments: This Laboratory Grown Diamond was created by Chemical Vapor Deposition (CVD) growth process and may include post-growth treatment.
Type IIa

May 2, 2022

IGI Report Number **LG524248718**

Description **LABORATORY GROWN DIAMOND**

Shape and Cutting Style **PEAR BRILLIANT**

Measurements **9.45 X 6.42 X 3.88 MM**

GRADING RESULTS

Carat Weight **1.44 CARAT**

Color Grade **G**

Clarity Grade **VS 2**

ADDITIONAL GRADING INFORMATION

Polish **EXCELLENT**

Symmetry **EXCELLENT**

Fluorescence **NONE**

Inscription(s) **LABGROWN IGI LG524248718**

Comments: This Laboratory Grown Diamond was created by Chemical Vapor Deposition (CVD) growth process and may include post-growth treatment.
Type IIa



IGI Report No. LG524248718	1.44 CARAT	G
PEAR BRILLIANT	VS 2	
9.45 X 6.42 X 3.88 MM	60.4%	
Carat Weight	65.5%	
Color Grade	Medium To Thick (Faceted)	
Clarity Grade	Pointed	
Depth	EXCELLENT	
Table	EXCELLENT	
Girdle	NONE	
Culet	LABGROWN IGI LG524248718	
Polish		
Symmetry		
Fluorescence		
Inscription(s)		
Comments:		

This Laboratory Grown Diamond was created by Chemical Vapor Deposition (CVD) growth process and may include post-growth treatment.
Type IIa