



**ELECTRONIC COPY**

**LABORATORY GROWN DIAMOND REPORT**

May 18, 2022  
 IGI Report Number **LG526258654**  
 Description **LABORATORY GROWN  
DIAMOND**  
 Shape and Cutting Style **PEAR BRILLIANT**  
 Measurements **10.07 X 6.49 X 3.92 MM**

**GRADING RESULTS**

Carat Weight **1.51 CARAT**  
 Color Grade **G**  
 Clarity Grade **SI 1**

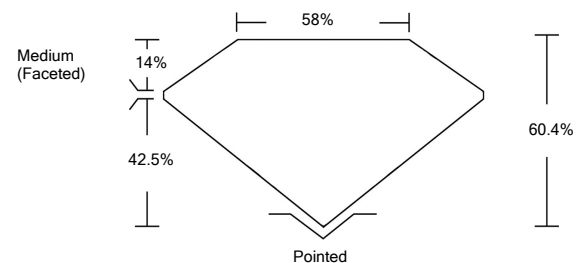
**ADDITIONAL GRADING INFORMATION**

Polish **EXCELLENT**  
 Symmetry **VERY GOOD**  
 Fluorescence **NONE**  
 Inscription(s) **LABGROWN IGI LG526258654**

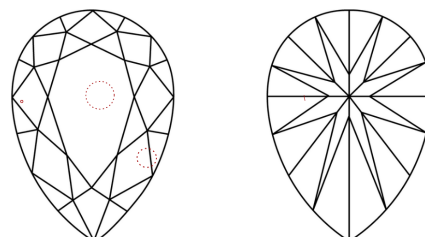
Comments: This Laboratory Grown Diamond was created by Chemical Vapor Deposition (CVD) growth process and may include post-growth treatment.  
 Type IIa

LG526258654

**PROPORTIONS**



**CLARITY CHARACTERISTICS**



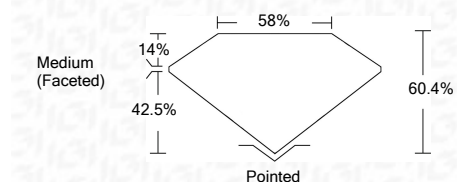
**KEY TO SYMBOLS**

Red symbols indicate internal characteristics.  
 Green symbols indicate external characteristics.

May 18, 2022  
 IGI Report Number **LG526258654**  
 Description **LABORATORY GROWN  
DIAMOND**  
 Shape and Cutting Style **PEAR BRILLIANT**  
 Measurements **10.07 X 6.49 X 3.92 MM**

**GRADING RESULTS**

Carat Weight **1.51 CARAT**  
 Color Grade **G**  
 Clarity Grade **SI 1**



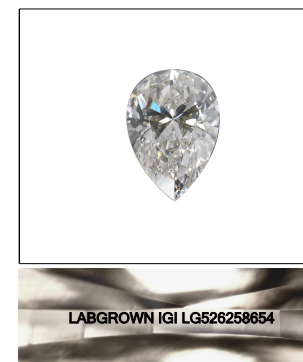
**ADDITIONAL GRADING INFORMATION**

Polish **EXCELLENT**  
 Symmetry **VERY GOOD**  
 Fluorescence **NONE**  
 Inscription(s) **LABGROWN IGI LG526258654**

Comments: This Laboratory Grown Diamond was created by Chemical Vapor Deposition (CVD) growth process and may include post-growth treatment.  
 Type IIa

**GRADING SCALES**

COLOR GRADING SCALE	CL	NC	FT	VLT	LT	
	COLORLESS D-F	NEAR COLORLESS G-J	FAINT K-M	VERY LIGHT N-R	LIGHT S-Z	
CLARITY (10x) GRADING SCALE	FL	IF	VVS	VS	SI	I
	FLAWLESS INTERNALLY FLAWLESS	VERY VERY SLIGHTLY INCLUDED	VERY SLIGHTLY INCLUDED	SLIGHTLY INCLUDED	INCLUDED	



**LASERSCRIBE<sup>SM</sup>**  
 Sample Image Used



IGI Report No. LG526258654	1.51 CARAT	G	SI 1	Pointed
PEAR BRILLIANT	10.07 X 6.49 X 3.92 MM	60.4%	58%	EXCELLENT
Carat Weight	Color Grade	Clarity Grade	Depth	Symmetry
Table	Girdle	Culet	Polish	Fluorescence
Inscription(s)	Comments:	This Laboratory Grown Diamond was created by Chemical Vapor Deposition (CVD) growth process and may include post-growth treatment. Type IIa		