



**ELECTRONIC COPY**

**LABORATORY GROWN DIAMOND REPORT**

June 1, 2022  
 IGI Report Number **LG526258770**  
 Description **LABORATORY GROWN  
DIAMOND**  
 Shape and Cutting Style **OVAL BRILLIANT**  
 Measurements **11.57 X 8.15 X 5.09 MM**  
**GRADING RESULTS**  
 Carat Weight **3.02 CARATS**  
 Color Grade **FANCY INTENSE BROWNISH  
PINK**  
 Clarity Grade **VS 2**

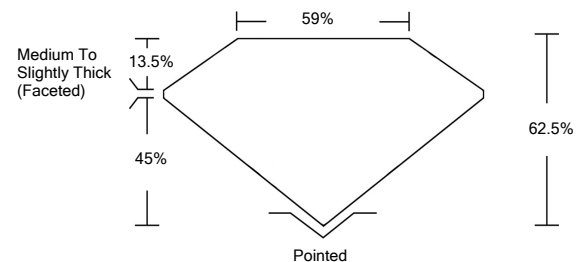
**ADDITIONAL GRADING INFORMATION**

Polish **EXCELLENT**  
 Symmetry **EXCELLENT**  
 Fluorescence **STRONG**  
 Inscription(s) **LABGROWN IGI LG526258770**

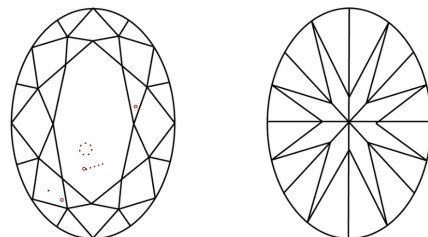
Comments: This Laboratory Grown Diamond was created by Chemical Vapor Deposition (CVD) growth process. Indications of post-growth treatment.

LG526258770

**PROPORTIONS**



**CLARITY CHARACTERISTICS**



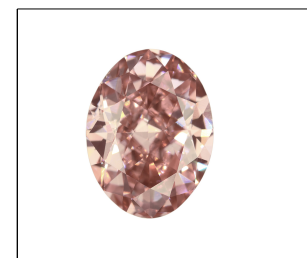
**KEY TO SYMBOLS**

Red symbols indicate internal characteristics.  
 Green symbols indicate external characteristics.

**LABORATORY GROWN  
DIAMOND REPORT**

**GRADING SCALES**

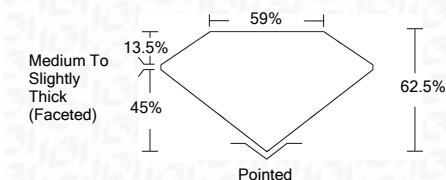
COLOR GRADING SCALE	CL	NC	FT	VLT	LT	
	COLORLESS D-F	NEAR COLORLESS G-J	FAINT K-M	VERY LIGHT N-R	LIGHT S-Z	
CLARITY (10x) GRADING SCALE	FL	IF	VVS	VS	SI	I
	FLAWLESS INTERNALLY FLAWLESS	VERY VERY SLIGHTLY INCLUDED	VERY SLIGHTLY INCLUDED	SLIGHTLY INCLUDED	INCLUDED	



**LASERSCRIBE<sup>SM</sup>**

Sample Image Used

June 1, 2022  
 IGI Report Number **LG526258770**  
 Description **LABORATORY GROWN  
DIAMOND**  
 Shape and Cutting Style **OVAL BRILLIANT**  
 Measurements **11.57 X 8.15 X 5.09 MM**  
**GRADING RESULTS**  
 Carat Weight **3.02 CARATS**  
 Color Grade **FANCY INTENSE BROWNISH  
PINK**  
 Clarity Grade **VS 2**



**ADDITIONAL GRADING INFORMATION**

Polish **EXCELLENT**  
 Symmetry **EXCELLENT**  
 Fluorescence **STRONG**  
 Inscription(s) **LABGROWN IGI LG526258770**  
 Comments: This Laboratory Grown Diamond was created by Chemical Vapor Deposition (CVD) growth process. Indications of post-growth treatment.



**IGI**

June 1, 2022  
 IGI Report No. **LG526258770**  
**OVAL BRILLIANT**  
 Measurements **11.57 X 8.15 X 5.09 MM**  
 Carat Weight **3.02 CARATS**  
 Color Grade **FANCY INTENSE BROWNISH PINK**  
 Clarity Grade **VS 2**  
 Depth **62.5%**  
 Table **59%**  
 Girdle **Medium To Slightly Thick (Faceted)**  
 Culet **Pointed**  
 Polish **EXCELLENT**  
 Symmetry **EXCELLENT**  
 Fluorescence **STRONG**  
 Inscription(s) **LABGROWN IGI LG526258770**  
 Comments: This Laboratory Grown Diamond was created by Chemical Vapor Deposition (CVD) growth process. Indications of post-growth treatment.

