



**INTERNATIONAL
GEMOLOGICAL
INSTITUTE**

LABORATORY GROWN DIAMOND REPORT

IGI LABORATORY GROWN DIAMOND IDENTIFICATION REPORT

June 9, 2022
 IGI Report Number **LG526258848**
 Description **LABORATORY GROWN DIAMOND**
 Shape and Cutting Style **PEAR BRILLIANT**
 Measurements **8.66 X 5.43 X 3.45 MM**

GRADING RESULTS

Carat Weight **0.98 CARAT**
 Color Grade **FANCY VIVID GREENISH BLUE**
 Clarity Grade **VS 1**

ADDITIONAL GRADING INFORMATION

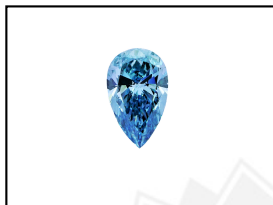
Polish **EXCELLENT**
 Symmetry **EXCELLENT**
 Fluorescence **NONE**
 Inscription(s) **LABGROWN IGI LG526258848**

Comments: This Laboratory Grown Diamond was created by Chemical Vapor Deposition (CVD) growth process.
 Indications of post-growth treatment.

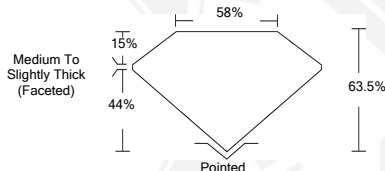
ELECTRONIC COPY

**LABORATORY GROWN
DIAMOND REPORT**

LG526258848



LASERSCRIBESM
Sample Images Used



**IGI LABORATORY GROWN
DIAMOND ID REPORT**

June 9, 2022
 IGI Report Number **LG526258848**
PEAR BRILLIANT
8.66 X 5.43 X 3.45 MM
 Carat Weight **0.98 CARAT**
 Color Grade **FANCY VIVID GREENISH BLUE**
 Clarity Grade **VS 1**
 Polish **EXCELLENT**
 Symmetry **EXCELLENT**
 Fluorescence **NONE**
 Inscription(s) **LABGROWN IGI LG526258848**

Comments: This Laboratory Grown Diamond was created by Chemical Vapor Deposition (CVD) growth process.
 Indications of post-growth treatment.

**IGI LABORATORY GROWN
DIAMOND ID REPORT**

June 9, 2022
 IGI Report Number **LG526258848**
PEAR BRILLIANT
8.66 X 5.43 X 3.45 MM
 Carat Weight **0.98 CARAT**
 Color Grade **FANCY VIVID GREENISH BLUE**
 Clarity Grade **VS 1**
 Polish **EXCELLENT**
 Symmetry **EXCELLENT**
 Fluorescence **NONE**
 Inscription(s) **LABGROWN IGI LG526258848**

Comments: This Laboratory Grown Diamond was created by Chemical Vapor Deposition (CVD) growth process.
 Indications of post-growth treatment.

THIS DOCUMENT WAS PRODUCED WITH THE FOLLOWING SECURITY MEASURES: SPECIAL DOCUMENT PAPER, INK SCREENS, WATERMARK, BACKGROUND DESIGN, HOLOGRAM AND OTHER SECURITY FEATURES NOT LISTED AND DO EXCEED DOCUMENT SECURITY INDUSTRY GUIDELINES.

For terms & conditions and to verify this report, please visit www.igi.org