



**INTERNATIONAL  
GEMOLOGICAL  
INSTITUTE**

**ELECTRONIC COPY**

**LABORATORY GROWN  
DIAMOND REPORT**

**IGI LABORATORY GROWN  
DIAMOND ID REPORT**

June 17, 2022  
IGI Report Number **LG526259011**  
**OVAL BRILLIANT**  
**6.36 X 4.54 X 2.87 MM**  
Carat Weight 0.52 CARAT  
Color Grade FANCY VIVID PINK  
Clarity Grade SI 1  
Polish EXCELLENT  
Symmetry EXCELLENT  
Fluorescence STRONG  
Inscription(s) LABGROWN IGI  
LG526259011

Comments: This Laboratory Grown Diamond was created by Chemical Vapor Deposition (CVD) growth process.  
Indications of post-growth treatment.

**LABORATORY GROWN DIAMOND REPORT**

**IGI LABORATORY GROWN DIAMOND IDENTIFICATION REPORT**

June 17, 2022  
IGI Report Number LG526259011  
Description LABORATORY GROWN DIAMOND  
Shape and Cutting Style OVAL BRILLIANT  
Measurements 6.36 X 4.54 X 2.87 MM

**GRADING RESULTS**

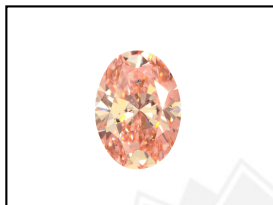
Carat Weight 0.52 CARAT  
Color Grade FANCY VIVID PINK  
Clarity Grade SI 1

**ADDITIONAL GRADING INFORMATION**

Polish EXCELLENT  
Symmetry EXCELLENT  
Fluorescence STRONG  
Inscription(s) LABGROWN IGI LG526259011

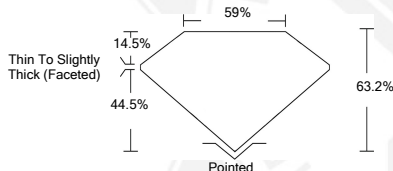
Comments: This Laboratory Grown Diamond was created by Chemical Vapor Deposition (CVD) growth process.  
Indications of post-growth treatment.

**LG526259011**



**LABGROWN IGI LG526259011**

**LASERSCRIBE<sup>SM</sup>**  
Sample Images Used



**IGI LABORATORY GROWN  
DIAMOND ID REPORT**

June 17, 2022  
IGI Report Number **LG526259011**  
**OVAL BRILLIANT**  
**6.36 X 4.54 X 2.87 MM**  
Carat Weight 0.52 CARAT  
Color Grade FANCY VIVID PINK  
Clarity Grade SI 1  
Polish EXCELLENT  
Symmetry EXCELLENT  
Fluorescence STRONG  
Inscription(s) LABGROWN IGI  
LG526259011

Comments: This Laboratory Grown Diamond was created by Chemical Vapor Deposition (CVD) growth process.  
Indications of post-growth treatment.

THIS DOCUMENT WAS PRODUCED WITH THE FOLLOWING SECURITY MEASURES: SPECIAL DOCUMENT PAPER, INK SCREENS, WATERMARK, BACKGROUND DESIGN, HOLOGRAM AND OTHER SECURITY FEATURES NOT LISTED AND DO EXCEED DOCUMENT SECURITY INDUSTRY GUIDELINES.

For terms & conditions and to verify this report, please visit [www.igi.org](http://www.igi.org)