



ELECTRONIC COPY

LABORATORY GROWN DIAMOND REPORT

LG526259627

May 26, 2022
IGI Report Number **LG526259627**

Description **LABORATORY GROWN
DIAMOND**

Shape and Cutting Style **CUT CORNERED
RECTANGULAR MODIFIED
BRILLIANT**

Measurements **8.70 X 6.35 X 4.33 MM**

GRADING RESULTS

Carat Weight **2.00 CARATS**

Color Grade **H**

Clarity Grade **VVS 2**

ADDITIONAL GRADING INFORMATION

Polish **EXCELLENT**

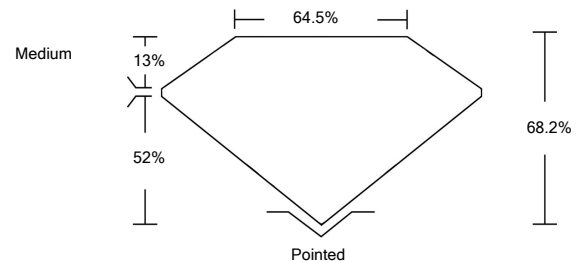
Symmetry **EXCELLENT**

Fluorescence **NONE**

Inscription(s) **LABGROWN IGI LG526259627**

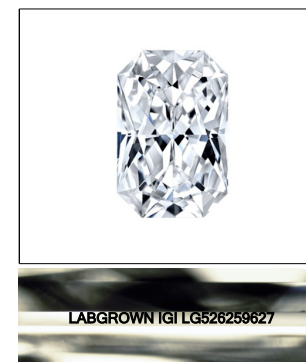
Comments: This Laboratory Grown Diamond was created by Chemical Vapor Deposition (CVD) growth process and may include post-growth treatment.
Type IIa

PROPORTIONS



GRADING SCALES

COLOR GRADING SCALE	CL	NC	FT	VLT	LT	
	COLORLESS D-F	NEAR COLORLESS G-J	FAINT K-M	VERY LIGHT N-R	LIGHT S-Z	
CLARITY (10x) GRADING SCALE	FL	IF	VVS	VS	SI	I
	FLAWLESS INTERNALLY FLAWLESS	VERY VERY SLIGHTLY INCLUDED	VERY SLIGHTLY INCLUDED	SLIGHTLY INCLUDED	INCLUDED	INCLUDED



LASERSCRIBESM

Sample Image Used

May 26, 2022

IGI Report Number **LG526259627**

Description **LABORATORY GROWN
DIAMOND**

Shape and Cutting Style **CUT CORNERED
RECTANGULAR MODIFIED
BRILLIANT**

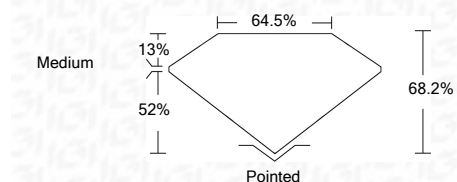
Measurements **8.70 X 6.35 X 4.33 MM**

GRADING RESULTS

Carat Weight **2.00 CARATS**

Color Grade **H**

Clarity Grade **VVS 2**



ADDITIONAL GRADING INFORMATION

Polish **EXCELLENT**

Symmetry **EXCELLENT**

Fluorescence **NONE**

Inscription(s) **LABGROWN IGI LG526259627**

Comments: This Laboratory Grown Diamond was created by Chemical Vapor Deposition (CVD) growth process and may include post-growth treatment.
Type IIa



IGI



May 26, 2022	IGI Report No. LG526259627	CUT CORNERED RECT. MODIFIED BRILLIANT	8.70 X 6.35 X 4.33 MM	2.00 CARATS	H	VVS 2	68.2%	64.5%	Medium	Pointed	EXCELLENT	EXCELLENT	NONE	LABGROWN IGI LG526259627
		Color Grade	Clarity Grade	Depth	Table	Girdle	Culet	Polish	Symmetry	Fluorescence	Inscription(s)	Comments:		

This Laboratory Grown Diamond was created by Chemical Vapor Deposition (CVD) growth process and may include post-growth treatment.
Type IIa