

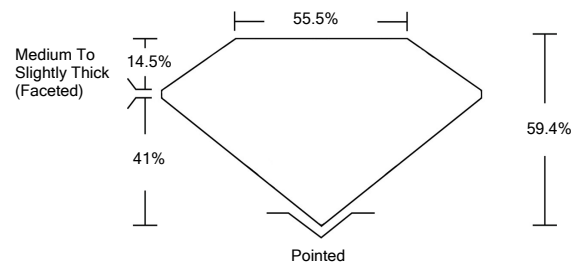


**ELECTRONIC COPY**

**LABORATORY GROWN DIAMOND REPORT**

LG526265363

**PROPORTIONS**



**GRADING SCALES**

COLOR GRADING SCALE	CL	NC	FT	VL	LT	
	COLORLESS D-F	NEAR COLORLESS G-J	FAINT K-M	VERY LIGHT N-R	LIGHT S-Z	
CLARITY (10x) GRADING SCALE	FL	IF	VVS	VS	SI	I
	FLAWLESS INTERNALLY FLAWLESS	VERY VERY SLIGHTLY INCLUDED	VERY SLIGHTLY INCLUDED	SLIGHTLY INCLUDED	INCLUDED	

May 4, 2022  
 IGI Report Number **LG526265363**  
 Description **LABORATORY GROWN DIAMOND**  
 Shape and Cutting Style **HEART BRILLIANT**  
 Measurements **6.86 X 8.27 X 4.91 MM**

May 4, 2022  
 IGI Report Number **LG526265363**  
 Description **LABORATORY GROWN DIAMOND**  
 Shape and Cutting Style **HEART BRILLIANT**  
 Measurements **6.86 X 8.27 X 4.91 MM**

**GRADING RESULTS**

Carat Weight **1.64 CARAT**  
 Color Grade **D**  
 Clarity Grade **VS 2**

**GRADING RESULTS**  
 Carat Weight **1.64 CARAT**  
 Color Grade **D**  
 Clarity Grade **VS 2**

**ADDITIONAL GRADING INFORMATION**

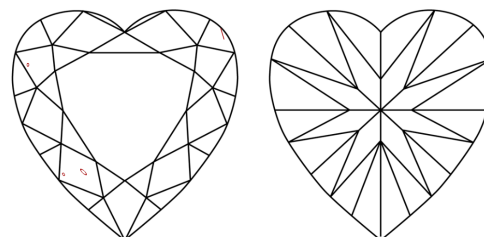
Polish **EXCELLENT**  
 Symmetry **EXCELLENT**  
 Fluorescence **NONE**

**ADDITIONAL GRADING INFORMATION**  
 Polish **EXCELLENT**  
 Symmetry **EXCELLENT**  
 Fluorescence **NONE**

Inscription(s) **LABGROWN IGI LG526265363**  
 Comments: As Grown - No indication of post-growth treatment. This Laboratory Grown Diamond was created by High Pressure High Temperature (HPHT) growth process. Type II

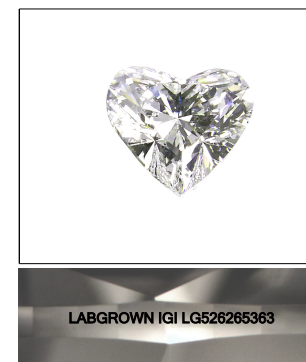
Inscription(s) **LABGROWN IGI LG526265363**  
 Comments: As Grown - No indication of post-growth treatment. This Laboratory Grown Diamond was created by High Pressure High Temperature (HPHT) growth process. Type II

**CLARITY CHARACTERISTICS**



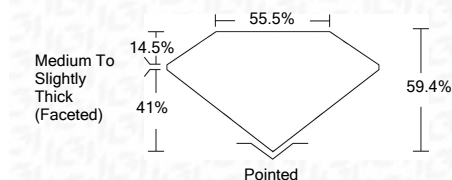
**KEY TO SYMBOLS**

Red symbols indicate internal characteristics.  
 Green symbols indicate external characteristics.



LABGROWN IGI LG526265363

LASERSCRIBE<sup>SM</sup>  
 Sample Image Used



**IGI**

May 4, 2022  
 IGI Report No. LG526265363  
**HEART BRILLIANT**  
 6.86 X 8.27 X 4.91 MM  
 Carat Weight  
 Color Grade **D**  
 Clarity Grade **VS 2**  
 Depth **59.4%**  
 Table **14.5%**  
 Girdle **Medium To Slightly Thick (Faceted)**  
 Culet **Pointed**  
 Polish **EXCELLENT**  
 Symmetry **EXCELLENT**  
 Fluorescence **NONE**  
 Inscription(s) **LABGROWN IGI LG526265363**  
 Comments: As Grown - No indication of post-growth treatment. This Laboratory Grown Diamond was created by High Pressure High Temperature (HPHT) growth process. Type II