



ELECTRONIC COPY

LABORATORY GROWN DIAMOND REPORT

April 20, 2022
IGI Report Number LG526268014
Description LABORATORY GROWN DIAMOND
Shape and Cutting Style ROUND BRILLIANT
Measurements 8.01 - 8.06 X 4.98 MM

GRADING RESULTS

Carat Weight 2.01 CARATS
Color Grade D
Clarity Grade SI 2
Cut Grade IDEAL

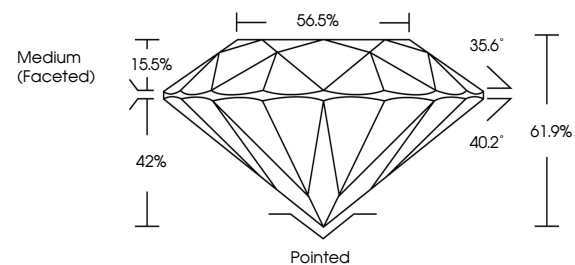
ADDITIONAL GRADING INFORMATION

Polish EXCELLENT
Symmetry EXCELLENT
Fluorescence NONE
Inscription(s) LABGROWN (IGI) LG526268014

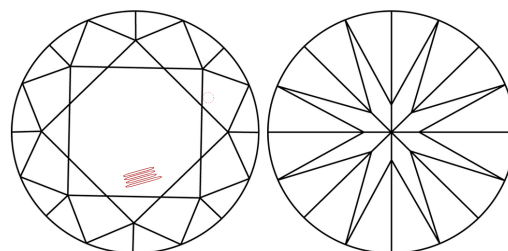
Comments: As Grown - No indication of post-growth treatment. This Laboratory Grown Diamond was created by High Pressure High Temperature (HPHT) growth process. Type II

LG526268014

PROPORTIONS



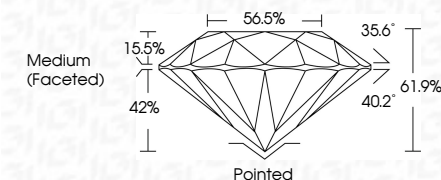
CLARITY CHARACTERISTICS



KEY TO SYMBOLS

Red symbols indicate internal characteristics. Green symbols indicate external characteristics.

April 20, 2022
IGI Report Number LG526268014
Description LABORATORY GROWN DIAMOND
Shape and Cutting Style ROUND BRILLIANT
Measurements 8.01 - 8.06 X 4.98 MM
GRADING RESULTS
Carat Weight 2.01 CARATS
Color Grade D
Clarity Grade SI 2
Cut Grade IDEAL

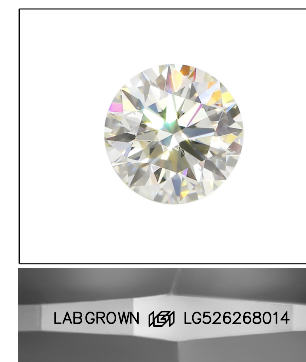


ADDITIONAL GRADING INFORMATION

Polish EXCELLENT
Symmetry EXCELLENT
Fluorescence NONE
Inscription(s) LABGROWN (IGI) LG526268014
Comments: As Grown - No indication of post-growth treatment. This Laboratory Grown Diamond was created by High Pressure High Temperature (HPHT) growth process. Type II

GRADING SCALES

Table with 2 rows and 5 columns. Row 1: COLOR GRADING SCALE (CL, NC, FT, VLT, LT) with corresponding descriptions. Row 2: CLARITY (10x) GRADING SCALE (FL, IF, VVS, VS, SI, I) with corresponding descriptions.



LASERSCRIBE SM

Sample Image Used



IGI

April 20, 2022
IGI Report No. LG526268014
ROUND BRILLIANT
8.01 - 8.06 X 4.98 MM
2.01 CARATS
Color Grade D
Clarity Grade SI 2
Cut Grade IDEAL
Depth 61.9%
Table 56.5%
Grade Medium (Faceted)
Culet Pointed
Polish EXCELLENT
Symmetry EXCELLENT
Fluorescence NONE
Inscription(s) LABGROWN (IGI) LG526268014

Comments: As Grown - No indication of post-growth treatment. This Laboratory Grown Diamond was created by High Pressure High Temperature (HPHT) growth process. Type II