

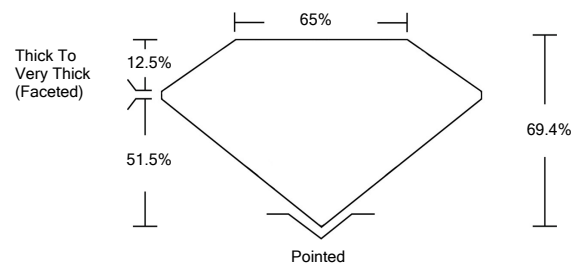


ELECTRONIC COPY

LABORATORY GROWN DIAMOND REPORT

LG526268843

PROPORTIONS



GRADING SCALES

COLOR GRADING SCALE	CL	NC	FT	VL	LT	
	COLORLESS D-F	NEAR COLORLESS G-J	FAINT K-M	VERY LIGHT N-R	LIGHT S-Z	
CLARITY (10x) GRADING SCALE	FL	IF	VVS	VS	SI	I
	FLAWLESS INTERNALLY FLAWLESS	VERY VERY SLIGHTLY INCLUDED	VERY SLIGHTLY INCLUDED	SLIGHTLY INCLUDED	INCLUDED	

April 25, 2022

IGI Report Number

LG526268843

Description

LABORATORY GROWN DIAMOND

Shape and Cutting Style

CUSHION BRILLIANT

Measurements

8.76 X 7.36 X 5.11 MM

GRADING RESULTS

Carat Weight

3.01 CARATS

Color Grade

G

Clarity Grade

VS 1

April 25, 2022

IGI Report Number

LG526268843

Description

LABORATORY GROWN DIAMOND

Shape and Cutting Style

CUSHION BRILLIANT

Measurements

8.76 X 7.36 X 5.11 MM

GRADING RESULTS

Carat Weight

3.01 CARATS

Color Grade

G

Clarity Grade

VS 1

ADDITIONAL GRADING INFORMATION

Polish

EXCELLENT

Symmetry

VERY GOOD

Fluorescence

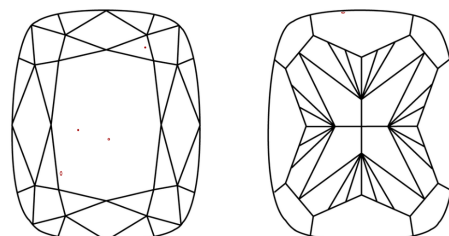
NONE

Inscription(s)

LABGROWN IGI LG526268843

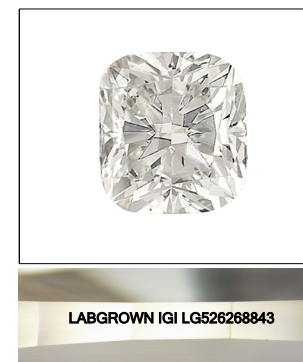
Comments: This Laboratory Grown Diamond was created by Chemical Vapor Deposition (CVD) growth process and may include post-growth treatment.
Type IIa

CLARITY CHARACTERISTICS



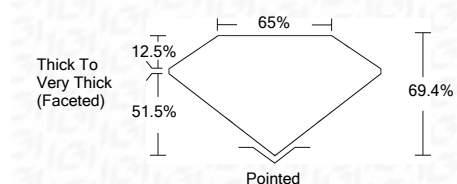
KEY TO SYMBOLS

Red symbols indicate internal characteristics.
Green symbols indicate external characteristics.



LASERSCRIBESM

Sample Image Used



ADDITIONAL GRADING INFORMATION

Polish

EXCELLENT

Symmetry

VERY GOOD

Fluorescence

NONE

Inscription(s)

LABGROWN IGI LG526268843

Comments: This Laboratory Grown Diamond was created by Chemical Vapor Deposition (CVD) growth process and may include post-growth treatment.
Type IIa



IGI



April 25, 2022	IGI Report No. LG526268843	3.01 CARATS	G
CUSHION BRILLIANT	8.76 X 7.36 X 5.11 MM	VS 1	68/4%
Carat Weight	8.76 X 7.36 X 5.11 MM	65%	Thick To Very Thick (Faceted)
Color Grade		Pointed	
Clarity Grade		EXCELLENT	
Depth		VERY GOOD	
Table		NONE	
Girdle		LABGROWN IGI	
Culet		LG526268843	
Polish			
Symmetry			
Fluorescence			
Inscription(s)			
Comments:	This Laboratory Grown Diamond was created by Chemical Vapor Deposition (CVD) growth process and may include post-growth treatment. Type IIa		