



ELECTRONIC COPY

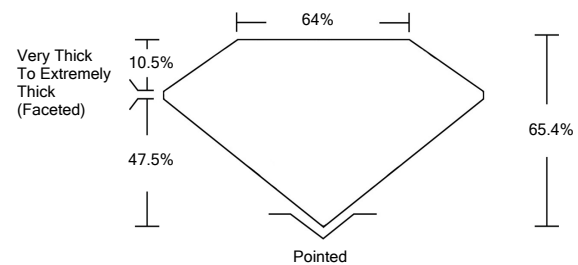
LABORATORY GROWN DIAMOND REPORT

LG526268853

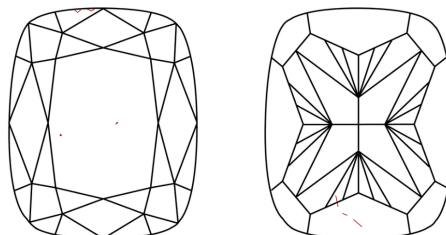
GRADING SCALES

COLOR GRADING SCALE	CL	NC	FT	VLT	LT	
	COLORLESS D-F	NEAR COLORLESS G-J	FAINT K-M	VERY LIGHT N-R	LIGHT S-Z	
CLARITY (10x) GRADING SCALE	FL	IF	VVS	VS	SI	I
	FLAWLESS INTERNALLY FLAWLESS	VERY VERY SLIGHTLY INCLUDED	VERY SLIGHTLY INCLUDED	SLIGHTLY INCLUDED	INCLUDED	

PROPORTIONS

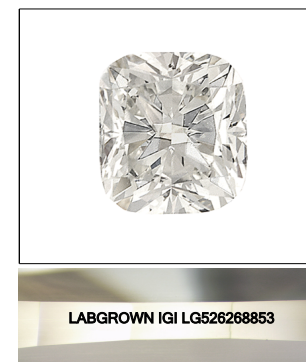


CLARITY CHARACTERISTICS



KEY TO SYMBOLS

Red symbols indicate internal characteristics.
Green symbols indicate external characteristics.



LASERSCRIBESM
Sample Image Used

April 22, 2022

IGI Report Number

LG526268853

Description

**LABORATORY GROWN
DIAMOND**

Shape and Cutting Style

CUSHION BRILLIANT

Measurements

8.25 X 7.80 X 5.10 MM

GRADING RESULTS

Carat Weight

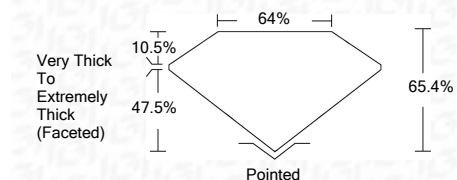
3.00 CARATS

Color Grade

G

Clarity Grade

VS 1



ADDITIONAL GRADING INFORMATION

Polish

EXCELLENT

Symmetry

EXCELLENT

Fluorescence

NONE

Inscription(s)

LABGROWN IGI LG526268853

Comments: This Laboratory Grown Diamond was created by Chemical Vapor Deposition (CVD) growth process and may include post-growth treatment.
Type IIa



IGI

IGI Report No. LG526268853	3.00 CARATS	G	VS 1	64%	47.5%	10.5%	Pointed	EXCELLENT	EXCELLENT	NONE	LABGROWN IGI LG526268853	
CUSHION BRILLIANT	8.25 X 7.80 X 5.10 MM	Color Grade	Clarity Grade	Depth	Table	Girdle	Very Thick To Extremely Thick (Faceted)	Culet	Polish	Symmetry	Fluorescence	Inscription(s)

Comments: This Laboratory Grown Diamond was created by Chemical Vapor Deposition (CVD) growth process and may include post-growth treatment.
Type IIa

