



ELECTRONIC COPY

LABORATORY GROWN DIAMOND REPORT

April 27, 2022
IGI Report Number LG526271214
Description LABORATORY GROWN DIAMOND
Shape and Cutting Style ROUND BRILLIANT
Measurements 9.35 - 9.39 X 5.74 MM

GRADING RESULTS

Carat Weight 3.11 CARATS
Color Grade I
Clarity Grade SI 1
Cut Grade IDEAL

ADDITIONAL GRADING INFORMATION

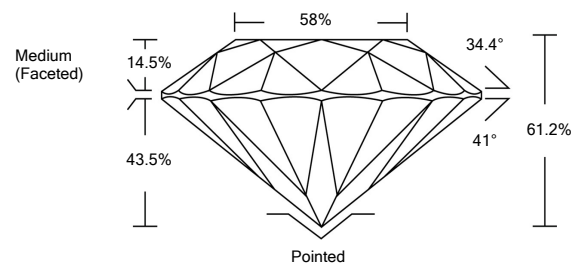
Polish EXCELLENT
Symmetry EXCELLENT
Fluorescence NONE

Inscription(s) LABGROWN IGI LG526271214

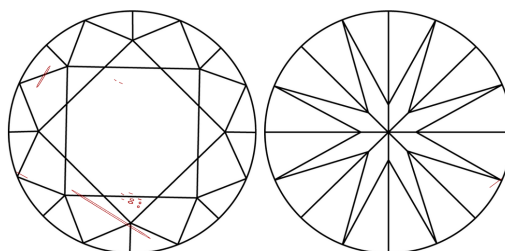
Comments: As Grown - No indication of post-growth treatment. This Laboratory Grown Diamond was created by High Pressure High Temperature (HPHT) growth process. Type II Faint Blue

LG526271214

PROPORTIONS



CLARITY CHARACTERISTICS



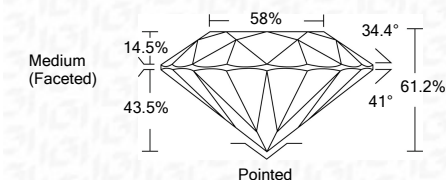
KEY TO SYMBOLS

Red symbols indicate internal characteristics. Green symbols indicate external characteristics.

GRADING SCALES

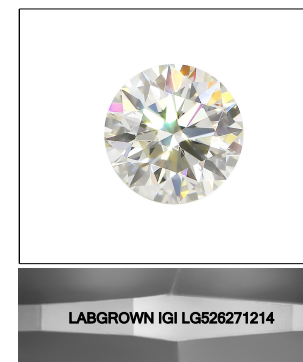
Table showing grading scales for Color (CL), Clarity (10x), and other categories with corresponding descriptions like 'Colorless D-F', 'Near Colorless G-J', etc.

April 27, 2022
IGI Report Number LG526271214
Description LABORATORY GROWN DIAMOND
Shape and Cutting Style ROUND BRILLIANT
Measurements 9.35 - 9.39 X 5.74 MM
GRADING RESULTS
Carat Weight 3.11 CARATS
Color Grade I
Clarity Grade SI 1
Cut Grade IDEAL



ADDITIONAL GRADING INFORMATION

Polish EXCELLENT
Symmetry EXCELLENT
Fluorescence NONE
Inscription(s) LABGROWN IGI LG526271214
Comments: As Grown - No indication of post-growth treatment. This Laboratory Grown Diamond was created by High Pressure High Temperature (HPHT) growth process. Type II Faint Blue



LASERSCRIBE SM Sample Image Used



IGI

April 27, 2022
IGI Report No. LG526271214
ROUND BRILLIANT
9.35 - 9.39 X 5.74 MM
3.11 CARATS
I
SI 1
IDEAL
61.2%
58%
Medium (Faceted)
Pointed
EXCELLENT
EXCELLENT
NONE
LABGROWN IGI LG526271214
Comments: As Grown - No indication of post-growth treatment. This Laboratory Grown Diamond was created by High Pressure High Temperature (HPHT) growth process. Type II Faint Blue