



ELECTRONIC COPY

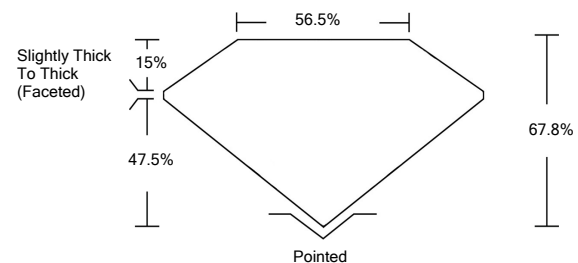
LABORATORY GROWN DIAMOND REPORT

LG526272528

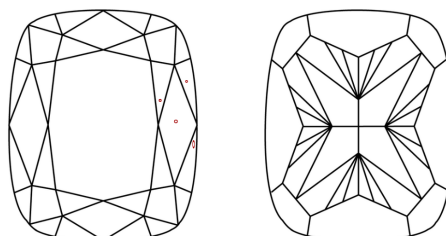
GRADING SCALES

COLOR GRADING SCALE	CL	NC	FT	VL	LT	
	COLORLESS D-F	NEAR COLORLESS G-J	FAINT K-M	VERY LIGHT N-R	LIGHT S-Z	
CLARITY (10x) GRADING SCALE	FL	IF	VVS	VS	SI	I
	FLAWLESS INTERNALLY FLAWLESS	VERY VERY SLIGHTLY INCLUDED	VERY SLIGHTLY INCLUDED	SLIGHTLY INCLUDED	INCLUDED	

PROPORTIONS

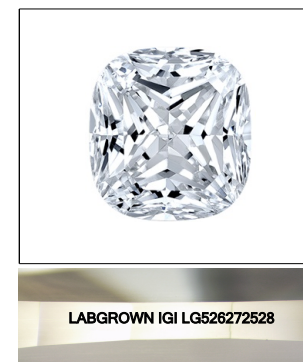


CLARITY CHARACTERISTICS



KEY TO SYMBOLS

Red symbols indicate internal characteristics.
Green symbols indicate external characteristics.



LASERSCRIBESM
Sample Image Used

April 23, 2022

IGI Report Number **LG526272528**

Description **LABORATORY GROWN DIAMOND**

Shape and Cutting Style **SQUARE CUSHION BRILLIANT**

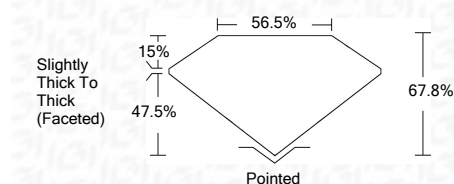
Measurements **8.26 X 6.90 X 4.68 MM**

GRADING RESULTS

Carat Weight **2.32 CARATS**

Color Grade **G**

Clarity Grade **VS 2**



ADDITIONAL GRADING INFORMATION

Polish **EXCELLENT**

Symmetry **EXCELLENT**

Fluorescence **NONE**

Inscription(s) **LABGROWN IGI LG526272528**

Comments: This Laboratory Grown Diamond was created by Chemical Vapor Deposition (CVD) growth process and may include post-growth treatment.
Type IIa

April 23, 2022

IGI Report Number **LG526272528**

Description **LABORATORY GROWN DIAMOND**

Shape and Cutting Style **SQUARE CUSHION BRILLIANT**

Measurements **8.26 X 6.90 X 4.68 MM**

GRADING RESULTS

Carat Weight **2.32 CARATS**

Color Grade **G**

Clarity Grade **VS 2**

ADDITIONAL GRADING INFORMATION

Polish **EXCELLENT**

Symmetry **EXCELLENT**

Fluorescence **NONE**

Inscription(s) **LABGROWN IGI LG526272528**

Comments: This Laboratory Grown Diamond was created by Chemical Vapor Deposition (CVD) growth process and may include post-growth treatment.
Type IIa



IGI Report No. LG526272528	2.32 CARATS	G
SQUARE CUSHION BRILLIANT	67.8%	VS 2
8.26 X 6.90 X 4.68 MM	56.5%	67.8%
Carat Weight	Slightly Thick To Thick (Faceted)	
Color Grade	Pointed	EXCELLENT
Clarity Grade	EXCELLENT	EXCELLENT
Depth	NONE	NONE
Table	LABGROWN IGI	LABGROWN IGI
Grade	LG526272528	LG526272528
Culet	Comments: This Laboratory Grown Diamond was created by Chemical Vapor Deposition (CVD) growth process and may include post-growth treatment. Type IIa	
Polish		
Symmetry		
Fluorescence		
Inscription(s)		
Comments:		