

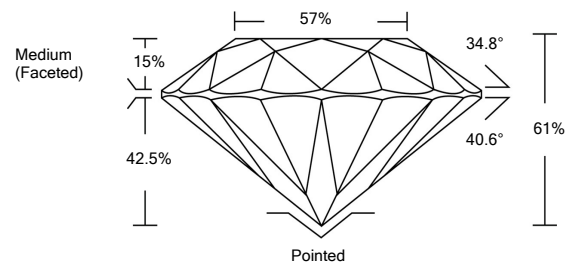


ELECTRONIC COPY

LABORATORY GROWN DIAMOND REPORT

LG526280919

PROPORTIONS



GRADING SCALES

| | | | | | | |
|-----------------------------|------------------------------|-----------------------------|------------------------|-------------------|-----------|---|
| COLOR GRADING SCALE | CL | NC | FT | VL | LT | |
| | COLORLESS D-F | NEAR COLORLESS G-J | FAINT K-M | VERY LIGHT N-R | LIGHT S-Z | |
| CLARITY (10x) GRADING SCALE | FL | IF | VVS | VS | SI | I |
| | FLAWLESS INTERNALLY FLAWLESS | VERY VERY SLIGHTLY INCLUDED | VERY SLIGHTLY INCLUDED | SLIGHTLY INCLUDED | INCLUDED | |

May 7, 2022

IGI Report Number **LG526280919**

Description **LABORATORY GROWN DIAMOND**

Shape and Cutting Style **ROUND BRILLIANT**

Measurements **6.69 - 6.71 X 4.09 MM**

GRADING RESULTS

Carat Weight **1.13 CARAT**

Color Grade **F**

Clarity Grade **SI 1**

Cut Grade **IDEAL**

May 7, 2022

IGI Report Number **LG526280919**

Description **LABORATORY GROWN DIAMOND**

Shape and Cutting Style **ROUND BRILLIANT**

Measurements **6.69 - 6.71 X 4.09 MM**

GRADING RESULTS

Carat Weight **1.13 CARAT**

Color Grade **F**

Clarity Grade **SI 1**

Cut Grade **IDEAL**

ADDITIONAL GRADING INFORMATION

Polish **EXCELLENT**

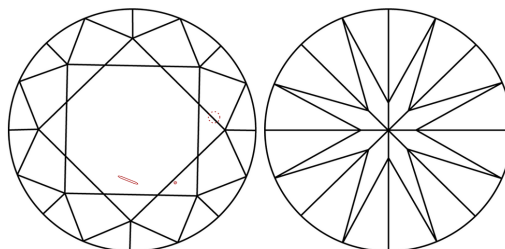
Symmetry **EXCELLENT**

Fluorescence **NONE**

Inscription(s) **LABGROWN IGI LG526280919**

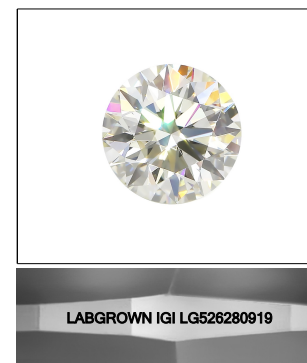
Comments: As Grown - No indication of post-growth treatment. This Laboratory Grown Diamond was created by High Pressure High Temperature (HPHT) growth process. Type II

CLARITY CHARACTERISTICS



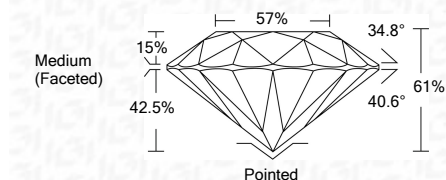
KEY TO SYMBOLS

Red symbols indicate internal characteristics.
Green symbols indicate external characteristics.



LASERSCRIBESM

Sample Image Used



ADDITIONAL GRADING INFORMATION

Polish **EXCELLENT**

Symmetry **EXCELLENT**

Fluorescence **NONE**

Inscription(s) **LABGROWN IGI LG526280919**

Comments: As Grown - No indication of post-growth treatment. This Laboratory Grown Diamond was created by High Pressure High Temperature (HPHT) growth process. Type II



IGI

| | | | | | | | | | | | | | | |
|----------------------------|----------------------------|-----------------------|------------|-------|-------|--------|-------|------------------|------------------|--------------|----------------|-----------|--------------------------|---|
| May 7, 2022 | IGI Report No. LG526280919 | 1.13 CARAT | F | SI 1 | IDEAL | 61% | 57% | Medium (Faceted) | Pointed | EXCELLENT | EXCELLENT | NONE | LABGROWN IGI LG526280919 | As Grown - No indication of post-growth treatment. This Laboratory Grown Diamond was created by High Pressure High Temperature (HPHT) growth process. Type II |
| IGI Report No. LG526280919 | ROUND BRILLIANT | 6.69 - 6.71 X 4.09 MM | 1.13 CARAT | F | SI 1 | IDEAL | 61% | 57% | Medium (Faceted) | Pointed | EXCELLENT | EXCELLENT | NONE | LABGROWN IGI LG526280919 |
| Carat Weight | Color Grade | Clarity Grade | Cut Grade | Depth | Table | Girdle | Culet | Polish | Symmetry | Fluorescence | Inscription(s) | Comments: | | |