



**INTERNATIONAL  
GEMOLOGICAL  
INSTITUTE**

**ELECTRONIC COPY** LABORATORY GROWN  
DIAMOND REPORT

**IGI LABORATORY GROWN  
DIAMOND ID REPORT**

**LABORATORY GROWN DIAMOND REPORT**

**LG526283702**

May 3, 2022

IGI Report Number **LG526283702**

**IGI LABORATORY GROWN DIAMOND IDENTIFICATION REPORT**

May 3, 2022  
 IGI Report Number LG526283702  
 Description LABORATORY GROWN DIAMOND  
 Shape and Cutting Style ROUND BRILLIANT  
 Measurements 6.32 - 6.36 X 3.90 MM

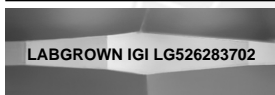
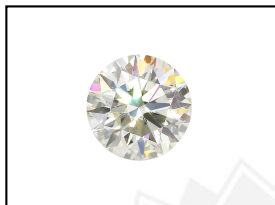
**ROUND BRILLIANT**

**6.32 - 6.36 X 3.90 MM**  
 Carat Weight 0.97 CARAT  
 Color Grade D  
 Clarity Grade SI 1  
 Cut Grade IDEAL  
 Polish EXCELLENT  
 Symmetry EXCELLENT  
 Fluorescence NONE  
 Inscription(s) LABGROWN IGI  
 LG526283702

Comments: As Grown - No indication of post-growth treatment.  
 This Laboratory Grown Diamond was created by High Pressure High Temperature (HPHT) growth process.  
 Type II

**GRADING RESULTS**

Carat Weight 0.97 CARAT  
 Color Grade D  
 Clarity Grade SI 1  
 Cut Grade IDEAL



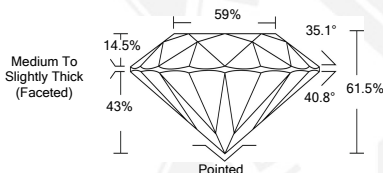
**ADDITIONAL GRADING INFORMATION**

Polish EXCELLENT  
 Symmetry EXCELLENT  
 Fluorescence NONE  
 Inscription(s) LABGROWN IGI LG526283702

**LASERSCRIBE** SM  
 Sample Images Used



Comments: As Grown - No indication of post-growth treatment.  
 This Laboratory Grown Diamond was created by High Pressure High Temperature (HPHT) growth process.  
 Type II



**IGI LABORATORY GROWN  
DIAMOND ID REPORT**

May 3, 2022

IGI Report Number **LG526283702**

**ROUND BRILLIANT**

**6.32 - 6.36 X 3.90 MM**  
 Carat Weight 0.97 CARAT  
 Color Grade D  
 Clarity Grade SI 1  
 Cut Grade IDEAL  
 Polish EXCELLENT  
 Symmetry EXCELLENT  
 Fluorescence NONE  
 Inscription(s) LABGROWN IGI  
 LG526283702

Comments: As Grown - No indication of post-growth treatment.  
 This Laboratory Grown Diamond was created by High Pressure High Temperature (HPHT) growth process.  
 Type II

THIS DOCUMENT WAS PRODUCED WITH THE FOLLOWING SECURITY MEASURES: SPECIAL DOCUMENT PAPER, INK SCREENS, WATERMARK, BACKGROUND DESIGN, HOLOGRAM AND OTHER SECURITY FEATURES NOT LISTED AND DO EXCEED DOCUMENT SECURITY INDUSTRY GUIDELINES.

For Terms & Conditions and to verify this report, please visit [www.igi.org](http://www.igi.org)