



**INTERNATIONAL
GEMOLOGICAL
INSTITUTE**

LABORATORY GROWN DIAMOND REPORT

IGI LABORATORY GROWN DIAMOND IDENTIFICATION REPORT

May 9, 2022
 IGI Report Number LG526288873
 Description LABORATORY GROWN DIAMOND
 Shape and Cutting Style HEART BRILLIANT
 Measurements 5.72 X 6.26 X 3.58 MM

GRADING RESULTS

Carat Weight 0.71 CARAT
 Color Grade H
 Clarity Grade VS 2

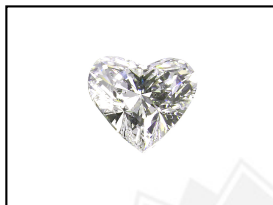
ADDITIONAL GRADING INFORMATION

Polish EXCELLENT
 Symmetry EXCELLENT
 Fluorescence NONE
 Inscription(s) LABGROWN IGI LG526288873

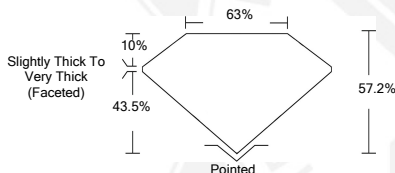
Comments: This Laboratory Grown Diamond was created by Chemical Vapor Deposition (CVD) growth process and may include post-growth treatment. Type IIa

**ELECTRONIC COPY LABORATORY GROWN
DIAMOND REPORT**

LG526288873



LASERSCRIBESM
Sample Images Used



**IGI LABORATORY GROWN
DIAMOND ID REPORT**

May 9, 2022
 IGI Report Number **LG526288873**
HEART BRILLIANT
5.72 X 6.26 X 3.58 MM
 Carat Weight 0.71 CARAT
 Color Grade H
 Clarity Grade VS 2
 Polish EXCELLENT
 Symmetry EXCELLENT
 Fluorescence NONE
 Inscription(s) LABGROWN IGI
 LG526288873

Comments: This Laboratory Grown Diamond was created by Chemical Vapor Deposition (CVD) growth process and may include post-growth treatment. Type IIa

**IGI LABORATORY GROWN
DIAMOND ID REPORT**

May 9, 2022
 IGI Report Number **LG526288873**
HEART BRILLIANT
5.72 X 6.26 X 3.58 MM
 Carat Weight 0.71 CARAT
 Color Grade H
 Clarity Grade VS 2
 Polish EXCELLENT
 Symmetry EXCELLENT
 Fluorescence NONE
 Inscription(s) LABGROWN IGI
 LG526288873

Comments: This Laboratory Grown Diamond was created by Chemical Vapor Deposition (CVD) growth process and may include post-growth treatment. Type IIa

THIS DOCUMENT WAS PRODUCED WITH THE FOLLOWING SECURITY MEASURES: SPECIAL DOCUMENT PAPER, INK SCREENS, WATERMARK, BACKGROUND DESIGN, HOLOGRAM AND OTHER SECURITY FEATURES NOT LISTED AND DO EXCEEDED DOCUMENT SECURITY INDUSTRY GUIDELINES.

For Terms & Conditions and to verify this report, please visit www.igi.org