



**INTERNATIONAL  
GEMOLOGICAL  
INSTITUTE**

**ELECTRONIC COPY LABORATORY GROWN  
DIAMOND REPORT**

**IGI LABORATORY GROWN  
DIAMOND ID REPORT**

May 10, 2022  
IGI Report Number **LG526288963**

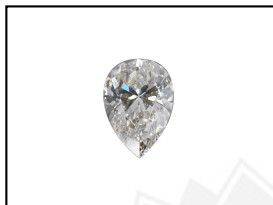
**LABORATORY GROWN DIAMOND REPORT**

**LG526288963**

**PEAR BRILLIANT**  
**7.92 X 5.00 X 3.21 MM**  
Carat Weight 0.75 CARAT  
Color Grade H  
Clarity Grade VVS 2  
Polish EXCELLENT  
Symmetry VERY GOOD  
Fluorescence NONE  
Inscription(s) LABGROWN IGI  
LG526288963

**IGI LABORATORY GROWN DIAMOND IDENTIFICATION REPORT**

May 10, 2022  
IGI Report Number LG526288963  
Description LABORATORY GROWN DIAMOND  
Shape and Cutting Style PEAR BRILLIANT  
Measurements 7.92 X 5.00 X 3.21 MM



Comments: This Laboratory Grown Diamond was created by Chemical Vapor Deposition (CVD) growth process and may include post-growth treatment.  
Type IIa

**GRADING RESULTS**

Carat Weight 0.75 CARAT  
Color Grade H  
Clarity Grade VVS 2

**LASERSCRIBE<sup>SM</sup>**  
Sample Images Used

**ADDITIONAL GRADING INFORMATION**

Polish EXCELLENT  
Symmetry VERY GOOD  
Fluorescence NONE  
Inscription(s) LABGROWN IGI LG526288963



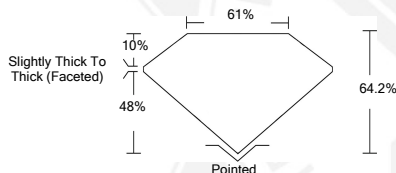
**IGI LABORATORY GROWN  
DIAMOND ID REPORT**

May 10, 2022  
IGI Report Number **LG526288963**

Comments: This Laboratory Grown Diamond was created by Chemical Vapor Deposition (CVD) growth process and may include post-growth treatment.  
Type IIa

**PEAR BRILLIANT**  
**7.92 X 5.00 X 3.21 MM**  
Carat Weight 0.75 CARAT  
Color Grade H  
Clarity Grade VVS 2  
Polish EXCELLENT  
Symmetry VERY GOOD  
Fluorescence NONE  
Inscription(s) LABGROWN IGI  
LG526288963

Comments: This Laboratory Grown Diamond was created by Chemical Vapor Deposition (CVD) growth process and may include post-growth treatment.  
Type IIa



THIS DOCUMENT WAS PRODUCED WITH THE FOLLOWING SECURITY MEASURES: SPECIAL DOCUMENT PAPER, INK SCREENS, WATERMARK, BACKGROUND DESIGN, HOLOGRAM AND OTHER SECURITY FEATURES NOT LISTED AND DO EXCEED DOCUMENT SECURITY INDUSTRY GUIDELINES.

For Terms & Conditions and to verify this report, please visit [www.igi.org](http://www.igi.org)