



**INTERNATIONAL
GEMOLOGICAL
INSTITUTE**

LABORATORY GROWN DIAMOND REPORT

IGI LABORATORY GROWN DIAMOND IDENTIFICATION REPORT

May 10, 2022
 IGI Report Number **LG526289556**
 Description **LABORATORY GROWN DIAMOND**
 Shape and Cutting Style **PRINCESS CUT**
 Measurements **4.83 X 4.65 X 3.41 MM**

GRADING RESULTS

Carat Weight **0.71 CARAT**
 Color Grade **D**
 Clarity Grade **VVS 2**

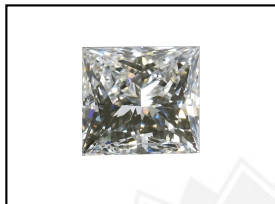
ADDITIONAL GRADING INFORMATION

Polish **VERY GOOD**
 Symmetry **GOOD**
 Fluorescence **NONE**
 Inscription(s) **LABGROWN IGI LG526289556**

Comments: As Grown - No indication of post-growth treatment.
 This Laboratory Grown Diamond was created by High Pressure High Temperature (HPHT) growth process.
 Type II

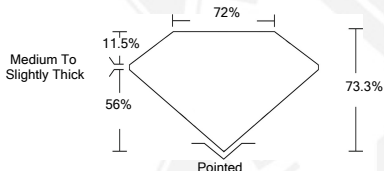
ELECTRONIC COPY **LABORATORY GROWN
DIAMOND REPORT**

LG526289556



LABGROWN IGI LG526289556

LASERSCRIBESM
Sample Images Used



**IGI LABORATORY GROWN
DIAMOND ID REPORT**

May 10, 2022
 IGI Report Number **LG526289556**
PRINCESS CUT
4.83 X 4.65 X 3.41 MM
 Carat Weight **0.71 CARAT**
 Color Grade **D**
 Clarity Grade **VVS 2**
 Polish **VERY GOOD**
 Symmetry **GOOD**
 Fluorescence **NONE**
 Inscription(s) **LABGROWN IGI
LG526289556**

Comments: As Grown - No indication of post-growth treatment.
 This Laboratory Grown Diamond was created by High Pressure High Temperature (HPHT) growth process.
 Type II

**IGI LABORATORY GROWN
DIAMOND ID REPORT**

May 10, 2022
 IGI Report Number **LG526289556**
PRINCESS CUT
4.83 X 4.65 X 3.41 MM
 Carat Weight **0.71 CARAT**
 Color Grade **D**
 Clarity Grade **VVS 2**
 Polish **VERY GOOD**
 Symmetry **GOOD**
 Fluorescence **NONE**
 Inscription(s) **LABGROWN IGI
LG526289556**

Comments: As Grown - No indication of post-growth treatment.
 This Laboratory Grown Diamond was created by High Pressure High Temperature (HPHT) growth process.
 Type II

THIS DOCUMENT WAS PRODUCED WITH THE FOLLOWING SECURITY MEASURES: SPECIAL DOCUMENT PAPER, INK SCREENS, WATERMARK, BACKGROUND DESIGN, HOLOGRAM AND OTHER SECURITY FEATURES NOT LISTED AND DO EXCEEDED DOCUMENT SECURITY INDUSTRY GUIDELINES.

For Terms & Conditions and to verify this report, please visit www.igi.org