

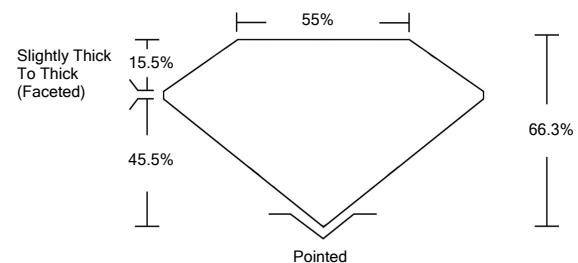


ELECTRONIC COPY

LABORATORY GROWN DIAMOND REPORT

LG526290720

PROPORTIONS



GRADING SCALES

| | | | | | | |
|-----------------------------|------------------------------|-----------------------------|------------------------|-------------------|-----------|---|
| COLOR GRADING SCALE | CL | NC | FT | VL | LT | |
| | COLORLESS D-F | NEAR COLORLESS G-J | FAINT K-M | VERY LIGHT N-R | LIGHT S-Z | |
| CLARITY (10x) GRADING SCALE | FL | IF | VVS | VS | SI | I |
| | FLAWLESS INTERNALLY FLAWLESS | VERY VERY SLIGHTLY INCLUDED | VERY SLIGHTLY INCLUDED | SLIGHTLY INCLUDED | INCLUDED | |

May 6, 2022
 IGI Report Number **LG526290720**
 Description **LABORATORY GROWN DIAMOND**
 Shape and Cutting Style **OVAL BRILLIANT**
 Measurements **9.18 X 6.27 X 4.16 MM**

GRADING RESULTS

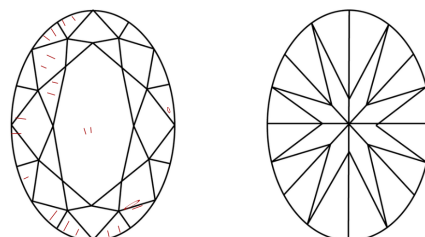
Carat Weight **1.50 CARAT**
 Color Grade **E**
 Clarity Grade **SI 1**

ADDITIONAL GRADING INFORMATION

Polish **EXCELLENT**
 Symmetry **EXCELLENT**
 Fluorescence **NONE**
 Inscription(s) **LABGROWN IGI LG526290720**

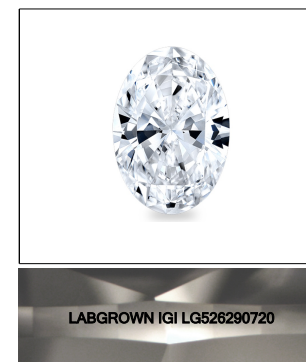
Comments: As Grown - No indication of post-growth treatment. This Laboratory Grown Diamond was created by High Pressure High Temperature (HPHT) growth process. Type II

CLARITY CHARACTERISTICS



KEY TO SYMBOLS

Red symbols indicate internal characteristics.
 Green symbols indicate external characteristics.

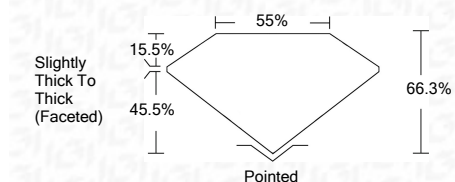


LABGROWN IGI LG526290720

LASERSCRIBESM

Sample Image Used

May 6, 2022
 IGI Report Number **LG526290720**
 Description **LABORATORY GROWN DIAMOND**
 Shape and Cutting Style **OVAL BRILLIANT**
 Measurements **9.18 X 6.27 X 4.16 MM**
GRADING RESULTS
 Carat Weight **1.50 CARAT**
 Color Grade **E**
 Clarity Grade **SI 1**



ADDITIONAL GRADING INFORMATION

Polish **EXCELLENT**
 Symmetry **EXCELLENT**
 Fluorescence **NONE**
 Inscription(s) **LABGROWN IGI LG526290720**

Comments: As Grown - No indication of post-growth treatment. This Laboratory Grown Diamond was created by High Pressure High Temperature (HPHT) growth process. Type II



IGI



| | | | | | | | | | | | |
|----------------------------|---|---|------|-------|-----|-----------------------------------|---------|-----------|-----------|------|--------------------------|
| IGI Report No. LG526290720 | 1.50 CARAT | E | SI 1 | 66.3% | 55% | Slightly Thick To Thick (Faceted) | Pointed | EXCELLENT | EXCELLENT | NONE | LABGROWN IGI LG526290720 |
| IGI Report No. LG526290720 | 9.18 X 6.27 X 4.16 MM | | | | | | | | | | |
| Carat Weight | 1.50 CARAT | | | | | | | | | | |
| Color Grade | E | | | | | | | | | | |
| Clarity Grade | SI 1 | | | | | | | | | | |
| Depth | 66.3% | | | | | | | | | | |
| Table | 55% | | | | | | | | | | |
| Grille | Slightly Thick To Thick (Faceted) | | | | | | | | | | |
| Culet | Pointed | | | | | | | | | | |
| Polish | EXCELLENT | | | | | | | | | | |
| Symmetry | EXCELLENT | | | | | | | | | | |
| Fluorescence | NONE | | | | | | | | | | |
| Inscription(s) | LABGROWN IGI LG526290720 | | | | | | | | | | |
| Comments: | As Grown - No indication of post-growth treatment. This Laboratory Grown Diamond was created by High Pressure High Temperature (HPHT) growth process. Type II | | | | | | | | | | |