

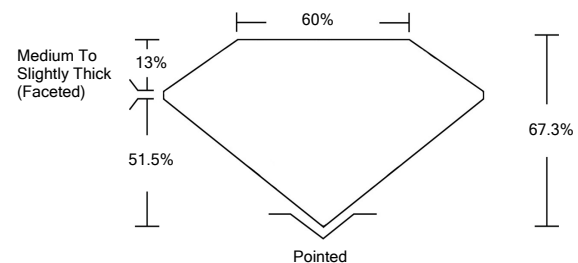


ELECTRONIC COPY

LABORATORY GROWN DIAMOND REPORT

LG528205324

PROPORTIONS



GRADING SCALES

COLOR GRADING SCALE	CL	NC	FT	VL	LT	
	COLORLESS D-F	NEAR COLORLESS G-J	FAINT K-M	VERY LIGHT N-R	LIGHT S-Z	
CLARITY (10x) GRADING SCALE	FL	IF	VVS	VS	SI	I
	FLAWLESS INTERNALLY FLAWLESS	VERY VERY SLIGHTLY INCLUDED	VERY SLIGHTLY INCLUDED	SLIGHTLY INCLUDED	INCLUDED	

May 7, 2022

IGI Report Number **LG528205324**

Description **LABORATORY GROWN DIAMOND**

Shape and Cutting Style **SQUARE CUSHION BRILLIANT**

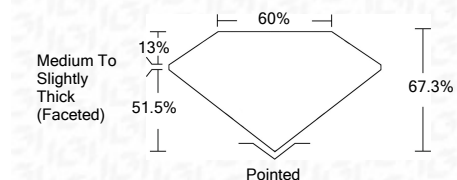
Measurements **6.98 X 6.75 X 4.54 MM**

GRADING RESULTS

Carat Weight **1.62 CARAT**

Color Grade **G**

Clarity Grade **VS 1**



ADDITIONAL GRADING INFORMATION

Polish **EXCELLENT**

Symmetry **EXCELLENT**

Fluorescence **NONE**

Inscription(s) **LABGROWN IGI LG528205324**

Comments: This Laboratory Grown Diamond was created by Chemical Vapor Deposition (CVD) growth process and may include post-growth treatment.
Type IIa

May 7, 2022

IGI Report Number **LG528205324**

Description **LABORATORY GROWN DIAMOND**

Shape and Cutting Style **SQUARE CUSHION BRILLIANT**

Measurements **6.98 X 6.75 X 4.54 MM**

GRADING RESULTS

Carat Weight **1.62 CARAT**

Color Grade **G**

Clarity Grade **VS 1**

ADDITIONAL GRADING INFORMATION

Polish **EXCELLENT**

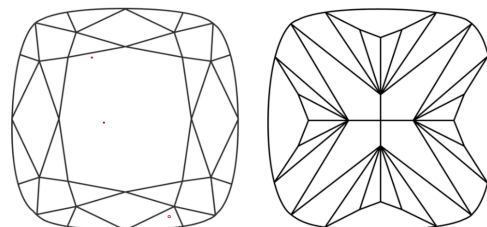
Symmetry **EXCELLENT**

Fluorescence **NONE**

Inscription(s) **LABGROWN IGI LG528205324**

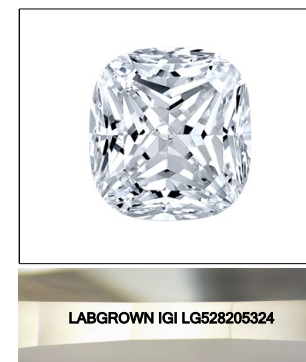
Comments: This Laboratory Grown Diamond was created by Chemical Vapor Deposition (CVD) growth process and may include post-growth treatment.
Type IIa

CLARITY CHARACTERISTICS



KEY TO SYMBOLS

Red symbols indicate internal characteristics.
Green symbols indicate external characteristics.



LASERSCRIBESM

Sample Image Used



IGI

IGI Report No. LG528205324	SQUARE CUSHION BRILLIANT	1.62 CARAT	G
6.98 X 6.75 X 4.54 MM		VS 1	67.3%
Carat Weight		60%	Medium To Slightly Thick (Faceted)
Color Grade		Pointed	
Clarity Grade		EXCELLENT	
Depth		EXCELLENT	
Table		LABGROWN IGI	
Girdle		LG528205324	
Culet			
Polish			
Symmetry			
Fluorescence			
Inscription(s)			
Comments:	This Laboratory Grown Diamond was created by Chemical Vapor Deposition (CVD) growth process and may include post-growth treatment. Type IIa		