



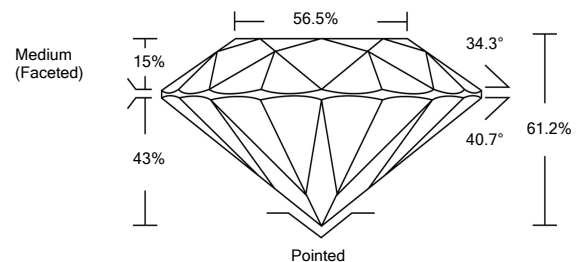
ELECTRONIC COPY

LG528205462

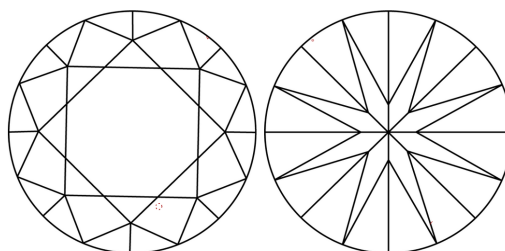
GRADING SCALES

COLOR GRADING SCALE	CL	NC	FT	VL	LT	
	COLORLESS D-F	NEAR COLORLESS G-J	FAINT K-M	VERY LIGHT N-R	LIGHT S-Z	
CLARITY (10x) GRADING SCALE	FL	IF	VVS	VS	SI	I
	FLAWLESS INTERNALLY FLAWLESS	VERY VERY SLIGHTLY INCLUDED	VERY SLIGHTLY INCLUDED	SLIGHTLY INCLUDED	INCLUDED	

PROPORTIONS

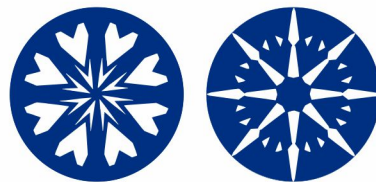


CLARITY CHARACTERISTICS

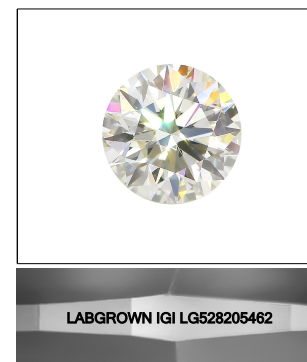


KEY TO SYMBOLS

Red symbols indicate internal characteristics. Green symbols indicate external characteristics.



www.igi.org



LASERSCRIBESM

Sample Image Used

May 2, 2022

IGI Report Number

LG528205462

Description

LABORATORY GROWN DIAMOND

Shape and Cutting Style

ROUND BRILLIANT

Measurements

8.52 - 8.57 X 5.23 MM

GRADING RESULTS

Carat Weight

2.34 CARATS

Color Grade

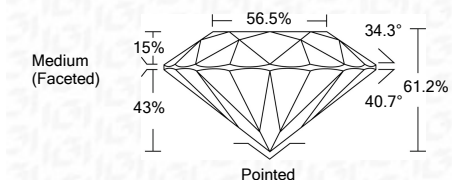
D

Clarity Grade

VVS 2

Cut Grade

IDEAL



ADDITIONAL GRADING INFORMATION

Polish

EXCELLENT

Symmetry

EXCELLENT

Fluorescence

NONE

Inscription(s)

LABGROWN IGI LG528205462

Comments: HEARTS & ARROWS

As Grown - No indication of post-growth treatment. This Laboratory Grown Diamond was created by High Pressure High Temperature (HPHT) growth process. Type II



IGI

IGI Report No. LG528205462	2.34 CARATS	D
ROUND BRILLIANT	VVS 2	IDEAL
8.52 - 8.57 X 5.23 MM	61.2%	56.5%
Carat Weight	Medium (Faceted)	
Color Grade	Pointed	
Clarity Grade	EXCELLENT	
Cut Grade	EXCELLENT	
Depth	NONE	
Table	LABGROWN IGI	
Girdle	LG528205462	
Culet		
Polish		
Symmetry		
Fluorescence		
Inscription(s)		
Comments:		
HEARTS & ARROWS		
As Grown - No indication of post-growth treatment.		
This Laboratory Grown Diamond was created by High Pressure High Temperature (HPHT) growth process. Type II		

