



**ELECTRONIC COPY**

LG528206829

**LABORATORY GROWN DIAMOND REPORT**

May 12, 2022  
 IGI Report Number **LG528206829**  
 Description **LABORATORY GROWN  
DIAMOND**  
 Shape and Cutting Style **ROUND BRILLIANT**  
 Measurements **8.18 - 8.23 X 5.10 MM**

**GRADING RESULTS**

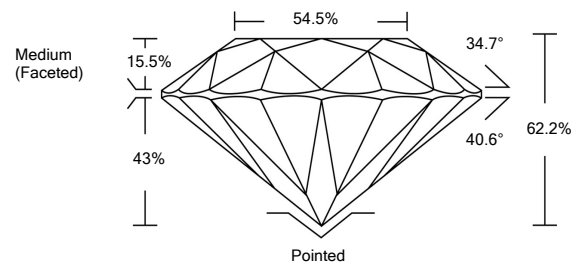
Carat Weight **2.11 CARATS**  
 Color Grade **E**  
 Clarity Grade **VS 2**  
 Cut Grade **IDEAL**

**ADDITIONAL GRADING INFORMATION**

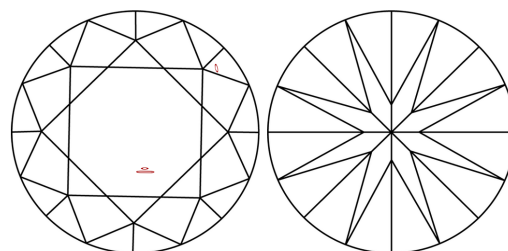
Polish **EXCELLENT**  
 Symmetry **EXCELLENT**  
 Fluorescence **NONE**  
 Inscription(s) **LABGROWN IGI LG528206829**

Comments: As Grown - No indication of post-growth treatment. This Laboratory Grown Diamond was created by High Pressure High Temperature (HPHT) growth process. Type II

**PROPORTIONS**



**CLARITY CHARACTERISTICS**

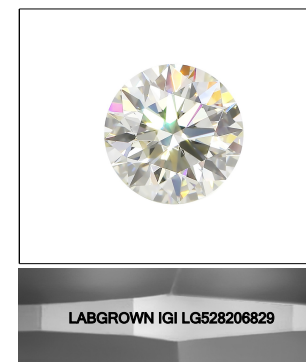


**KEY TO SYMBOLS**

Red symbols indicate internal characteristics.  
 Green symbols indicate external characteristics.

**GRADING SCALES**

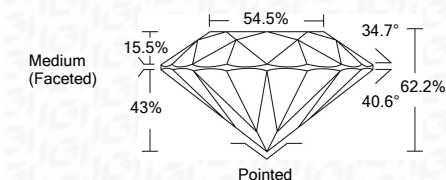
COLOR GRADING SCALE	CL	NC	FT	VLT	LT	
	COLORLESS D-F	NEAR COLORLESS G-J	FAINT K-M	VERY LIGHT N-R	LIGHT S-Z	
CLARITY (10x) GRADING SCALE	FL	IF	VVS	VS	SI	I
	FLAWLESS INTERNALLY FLAWLESS	VERY VERY SLIGHTLY INCLUDED	VERY SLIGHTLY INCLUDED	SLIGHTLY INCLUDED	INCLUDED	



**LASERSCRIBE<sup>SM</sup>**

Sample Image Used

May 12, 2022  
 IGI Report Number **LG528206829**  
 Description **LABORATORY GROWN  
DIAMOND**  
 Shape and Cutting Style **ROUND BRILLIANT**  
 Measurements **8.18 - 8.23 X 5.10 MM**  
**GRADING RESULTS**  
 Carat Weight **2.11 CARATS**  
 Color Grade **E**  
 Clarity Grade **VS 2**  
 Cut Grade **IDEAL**



**ADDITIONAL GRADING INFORMATION**

Polish **EXCELLENT**  
 Symmetry **EXCELLENT**  
 Fluorescence **NONE**  
 Inscription(s) **LABGROWN IGI LG528206829**  
 Comments: As Grown - No indication of post-growth treatment. This Laboratory Grown Diamond was created by High Pressure High Temperature (HPHT) growth process. Type II



**IGI**



May 12, 2022	IGI Report No. LG528206829	2.11 CARATS	E	Pointed
ROUND BRILLIANT	8.18 - 8.23 X 5.10 MM	VS 2	IDEAL	EXCELLENT
Carat Weight	8.18 - 8.23 X 5.10 MM	Depth	62.2%	EXCELLENT
Color Grade	2.11 CARATS	Table	15.5%	NONE
Clarity Grade	VS 2	Girdle	54.5%	LABGROWN IGI LG528206829
Cut Grade	IDEAL	Culet		
Depth	62.2%	Polish	EXCELLENT	
Table	15.5%	Symmetry	EXCELLENT	
Girdle	54.5%	Fluorescence	NONE	
Culet		Inscription(s)	LABGROWN IGI LG528206829	
Polish	EXCELLENT	Comments:	As Grown - No indication of post-growth treatment. This Laboratory Grown Diamond was created by High Pressure High Temperature (HPHT) growth process. Type II	
Symmetry	EXCELLENT			
Fluorescence	NONE			
Inscription(s)	LABGROWN IGI LG528206829			