



LABORATORY GROWN DIAMOND REPORT

May 10, 2022

IGI Report Number **LG528208706**

Description	LABORATORY GROWN DIAMOND
-------------	-----------------------------

Shape and Cutting Style **HEART BRILLIANT**

Measurements **6.97 X 8.17 X 4.65 MM**

GRADING RESULTS

Carat Weight **1.53 CARAT**

Color Grade **D**

Clarity Grade	SI 1
---------------	------

ADDITIONAL GRADING INFORMATION

Polish **EXCELLENT**

Symmetry **EXCELLENT**

Fluorescence **NONE**

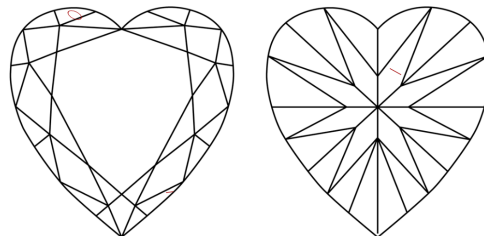
Inscription(s)	LABGROWN IGI LG528208706
----------------	--------------------------

Comments: As Grown - No indication of post-growth treatment.
This Laboratory Grown Diamond was created by High
Pressure High Temperature (HPHT) growth process.
Type II

Diagram illustrating the proportions of a diamond-shaped object (likely a gemstone) with the following dimensions and proportions:

- Top Width:** 59.5%
- Left Side Proportions:**
 - Top Left Facet: 13.5%
 - Bottom Left Facet: 40.5%
- Right Side Proportion:** 56.9%
- Bottom Point:** Pointed

CLARITY CHARACTERISTICS

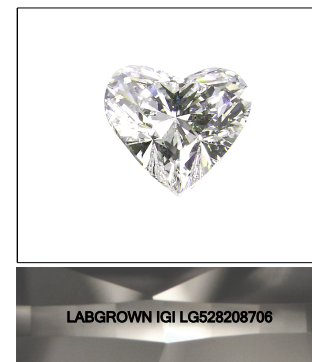


KEY TO SYMBOLS

Red symbols indicate internal characteristics.
Green symbols indicate external characteristics.

GRADING SCALES

COLOR GRADING SCALE	CL		NC		FT		VLT		LT	
	COLORLESS D-F		NEAR COLORLESS G-J		FAINT K-M		VERY LIGHT N-R		LIGHT S-Z	
CLARITY (10x) GRADING SCALE	FL IF		VVS		VS		SI		I	
	FLAWLESS INTERNALLY FLAWLESS		VERY VERY SLIGHTLY INCLUDED		VERY SLIGHTLY INCLUDED		SLIGHTLY INCLUDED		INCLUDED	

LASERSCRIBESM

Sample Image Used



© IGI 2020, International Gemological Institute

FD - 10 20

LABORATORY GROWN DIAMOND REPORT

May 10, 2022

IGI Report Number **LG528208706**

Description	LABORATORY GROWN DIAMOND
-------------	-----------------------------

Shape and Cutting Style **HEART BRILLIANT**

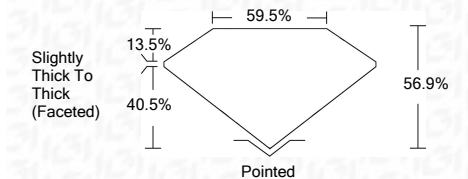
Measurements **6.97 X 8.17 X 4.65 MM**

GRADING RESULTS

Carat Weight **1.53 CARAT**

Color Grade **D**

Clarity Grade	SI 1
---------------	------



ADDITIONAL GRADING INFORMATION

Polish **EXCELLENT**

Symmetry **EXCELLENT**

Fluorescence **NONE**Inscription(s) **LABGROWN IGI LG528208706**

Comments: As Grown - No indication of post-growth treatment.
This Laboratory Grown Diamond was created by High Pressure High Temperature (HPHT) growth process.
Type II



May 10, 2022	IGI Report No. LG62626706	1.53 CARAT	D	S11	56.9%	Slightly Thick To Thick (Faceted)	Pointed	NONE	LABGROWN IGI LG62626706	Comments:	As Grown - No indication of post-growth treatment. This Laboratory Grown Diamond was created by High Pressure High Temperature (HPHT) Type II	
HEART BRILLIANT	9.87 X 8.17 X 4.85 MM	Carat Weight	Color Grade	Clarity Grade	Depth		Table					Symmetry

www.igi.org