



ELECTRONIC COPY

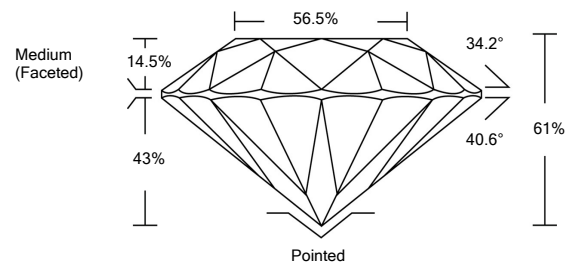
LG528220693

LABORATORY GROWN DIAMOND REPORT

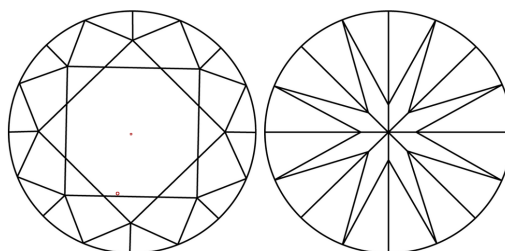
GRADING SCALES

COLOR GRADING SCALE	CL	NC	FT	VL	LT	
	COLORLESS D-F	NEAR COLORLESS G-J	FAINT K-M	VERY LIGHT N-R	LIGHT S-Z	
CLARITY (10x) GRADING SCALE	FL	IF	VVS	VS	SI	I
	FLAWLESS INTERNALLY FLAWLESS	VERY VERY SLIGHTLY INCLUDED	VERY SLIGHTLY INCLUDED	SLIGHTLY INCLUDED	INCLUDED	

PROPORTIONS

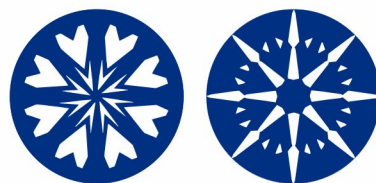


CLARITY CHARACTERISTICS

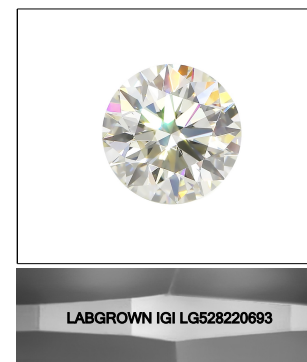


KEY TO SYMBOLS

Red symbols indicate internal characteristics. Green symbols indicate external characteristics.



www.igi.org



LASERSCRIBESM Sample Image Used

May 10, 2022

IGI Report Number

LG528220693

Description

LABORATORY GROWN DIAMOND

Shape and Cutting Style

ROUND BRILLIANT

Measurements

9.01 - 9.05 X 5.51 MM

GRADING RESULTS

Carat Weight

2.74 CARATS

Color Grade

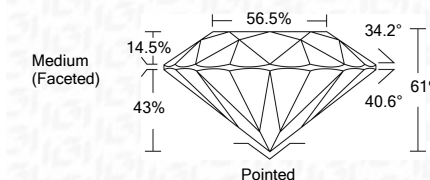
G

Clarity Grade

VS 1

Cut Grade

IDEAL



ADDITIONAL GRADING INFORMATION

Polish

EXCELLENT

Symmetry

EXCELLENT

Fluorescence

NONE

Inscription(s)

LABGROWN IGI LG528220693

Comments: HEARTS & ARROWS

This Laboratory Grown Diamond was created by Chemical Vapor Deposition (CVD) growth process and may include post-growth treatment. Type IIa



IGI



May 10, 2022
IGI Report No. LG528220693
ROUND BRILLIANT

9.01 - 9.05 X 5.51 MM
Carat Weight

2.74 CARATS

Color Grade

G

Clarity Grade

VS 1

Cut Grade

IDEAL

Depth

61%

Table

56.5%

Girdle

Medium (Faceted)

Culet

Pointed

Polish

EXCELLENT

Symmetry

EXCELLENT

Fluorescence

NONE

Inscription(s)

LABGROWN IGI LG528220693

Comments:

HEARTS & ARROWS

This Laboratory Grown Diamond was created

by Chemical Vapor Deposition (CVD) growth

process and may include post-growth

treatment. Type IIa