



ELECTRONIC COPY

LABORATORY GROWN DIAMOND REPORT

May 11, 2022
 IGI Report Number **LG528220714**
 Description **LABORATORY GROWN
DIAMOND**
 Shape and Cutting Style **ROUND BRILLIANT**
 Measurements **7.83 - 7.88 X 4.89 MM**

GRADING RESULTS

Carat Weight **1.88 CARAT**
 Color Grade **F**
 Clarity Grade **VS 2**
 Cut Grade **IDEAL**

ADDITIONAL GRADING INFORMATION

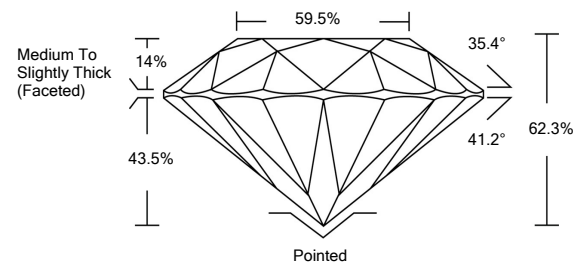
Polish **EXCELLENT**
 Symmetry **EXCELLENT**
 Fluorescence **NONE**

Inscription(s) **LABGROWN IGI LG528220714**

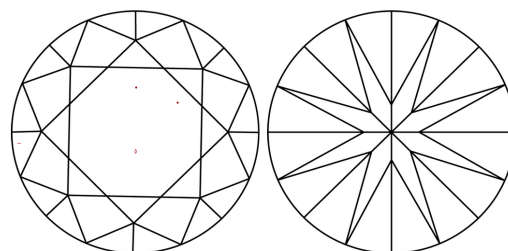
Comments: This Laboratory Grown Diamond was created by Chemical Vapor Deposition (CVD) growth process and may include post-growth treatment.
 Type IIa

LG528220714

PROPORTIONS



CLARITY CHARACTERISTICS

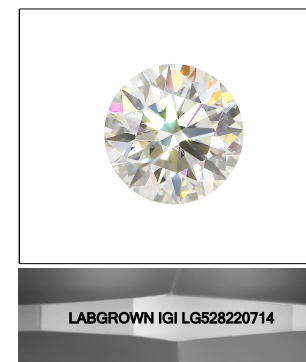


KEY TO SYMBOLS

Red symbols indicate internal characteristics.
 Green symbols indicate external characteristics.

GRADING SCALES

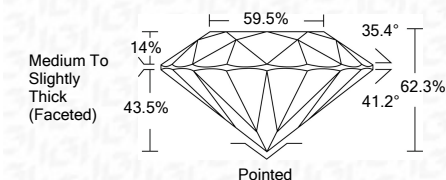
| COLOR GRADING SCALE | CL | NC | FT | VL | LT | |
|-----------------------------|------------------------------|-----------------------------|------------------------|-------------------|-----------|---|
| | COLORLESS D-F | NEAR COLORLESS G-J | FAINT K-M | VERY LIGHT N-R | LIGHT S-Z | |
| CLARITY (10x) GRADING SCALE | FL | IF | VVS | VS | SI | I |
| | FLAWLESS INTERNALLY FLAWLESS | VERY VERY SLIGHTLY INCLUDED | VERY SLIGHTLY INCLUDED | SLIGHTLY INCLUDED | INCLUDED | |



LASERSCRIBESM

Sample Image Used

May 11, 2022
 IGI Report Number **LG528220714**
 Description **LABORATORY GROWN
DIAMOND**
 Shape and Cutting Style **ROUND BRILLIANT**
 Measurements **7.83 - 7.88 X 4.89 MM**
GRADING RESULTS
 Carat Weight **1.88 CARAT**
 Color Grade **F**
 Clarity Grade **VS 2**
 Cut Grade **IDEAL**



ADDITIONAL GRADING INFORMATION

Polish **EXCELLENT**
 Symmetry **EXCELLENT**
 Fluorescence **NONE**

Inscription(s) **LABGROWN IGI LG528220714**

Comments: This Laboratory Grown Diamond was created by Chemical Vapor Deposition (CVD) growth process and may include post-growth treatment.
 Type IIa



IGI



| | | | | | | | |
|-----------------|----------------------------|------------|---------------------------------------------------------------------------------------------------------------------------------------------|---------|-----------|------------------------------------|--------------------------|
| May 11, 2022 | IGI Report No. LG528220714 | 1.88 CARAT | F | Pointed | EXCELLENT | EXCELLENT | LABGROWN IGI LG528220714 |
| ROUND BRILLIANT | 7.83 - 7.88 X 4.89 MM | VS 2 | IDEAL | 62.3% | 43.5% | Medium To Slightly Thick (Faceted) | None |
| Color Grade | Clarity Grade | Cut Grade | Depth | Table | Girdle | Polish | Symmetry |
| Fluorescence | Inscription(s) | Comments: | This Laboratory Grown Diamond was created by Chemical Vapor Deposition (CVD) growth process and may include post-growth treatment. Type IIa | | | | |