



**INTERNATIONAL
GEMOLOGICAL
INSTITUTE**

ELECTRONIC COPY

**LABORATORY GROWN
DIAMOND REPORT**

**IGI LABORATORY GROWN
DIAMOND ID REPORT**

May 28, 2022

IGI Report Number **LG528230323**

HEART BRILLIANT

5.50 X 6.90 X 4.06 MM

Carat Weight	0.90 CARAT
Color Grade	G
Clarity Grade	VS 1
Polish	EXCELLENT
Symmetry	EXCELLENT
Fluorescence	NONE
Inscription(s)	LABGROWN IGI LG528230323

Comments: This Laboratory Grown Diamond was created by Chemical Vapor Deposition (CVD) growth process and may include post-growth treatment.
Type IIa

LABORATORY GROWN DIAMOND REPORT

IGI LABORATORY GROWN DIAMOND IDENTIFICATION REPORT

May 28, 2022	LG528230323
IGI Report Number	
Description	LABORATORY GROWN DIAMOND
Shape and Cutting Style	HEART BRILLIANT
Measurements	5.50 X 6.90 X 4.06 MM

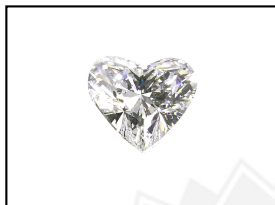
GRADING RESULTS

Carat Weight	0.90 CARAT
Color Grade	G
Clarity Grade	VS 1

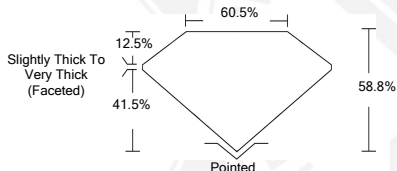
ADDITIONAL GRADING INFORMATION

Polish	EXCELLENT
Symmetry	EXCELLENT
Fluorescence	NONE
Inscription(s)	LABGROWN IGI LG528230323

Comments: This Laboratory Grown Diamond was created by Chemical Vapor Deposition (CVD) growth process and may include post-growth treatment.
Type IIa



LASERSCRIBESM
Sample Images Used



THIS DOCUMENT WAS PRODUCED WITH THE FOLLOWING SECURITY MEASURES: SPECIAL DOCUMENT PAPER, INK SCREENS, WATERMARK, BACKGROUND DESIGN, HOLOGRAM AND OTHER SECURITY FEATURES NOT LISTED AND DO EXCEED DOCUMENT SECURITY INDUSTRY GUIDELINES.

For terms & conditions and to verify this report, please visit www.igi.org

**IGI LABORATORY GROWN
DIAMOND ID REPORT**

May 28, 2022

IGI Report Number **LG528230323**

HEART BRILLIANT

5.50 X 6.90 X 4.06 MM

Carat Weight	0.90 CARAT
Color Grade	G
Clarity Grade	VS 1
Polish	EXCELLENT
Symmetry	EXCELLENT
Fluorescence	NONE
Inscription(s)	LABGROWN IGI LG528230323

Comments: This Laboratory Grown Diamond was created by Chemical Vapor Deposition (CVD) growth process and may include post-growth treatment.
Type IIa