



ELECTRONIC COPY

LABORATORY GROWN DIAMOND REPORT

May 30, 2022
IGI Report Number LG528231450
Description LABORATORY GROWN DIAMOND
Shape and Cutting Style ROUND BRILLIANT
Measurements 7.61 - 7.66 X 4.67 MM

GRADING RESULTS

Carat Weight 1.66 CARAT
Color Grade K
Clarity Grade VS 2
Cut Grade IDEAL

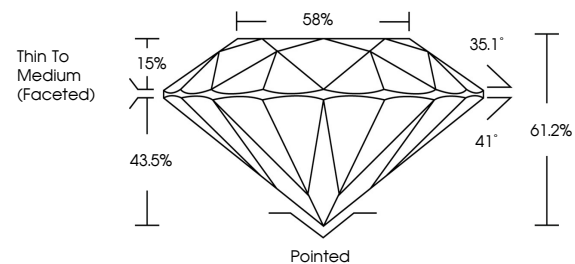
ADDITIONAL GRADING INFORMATION

Polish EXCELLENT
Symmetry VERY GOOD
Fluorescence NONE
Inscription(s) LABGROWN IGI LG528231450

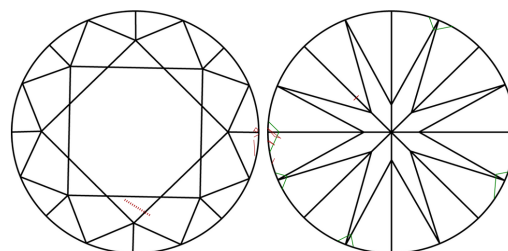
Comments: This Laboratory Grown Diamond was created by Chemical Vapor Deposition (CVD) growth process and may include post-growth treatment. Type IIa

LG528231450

PROPORTIONS



CLARITY CHARACTERISTICS



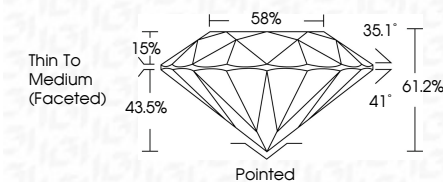
KEY TO SYMBOLS

Red symbols indicate internal characteristics.
Green symbols indicate external characteristics.

GRADING SCALES

Table showing Color Grading Scale (CL to LT) and Clarity (10x) Grading Scale (FL to I).

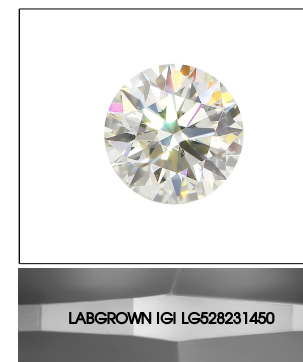
May 30, 2022
IGI Report Number LG528231450
Description LABORATORY GROWN DIAMOND
Shape and Cutting Style ROUND BRILLIANT
Measurements 7.61 - 7.66 X 4.67 MM
GRADING RESULTS
Carat Weight 1.66 CARAT
Color Grade K
Clarity Grade VS 2
Cut Grade IDEAL



ADDITIONAL GRADING INFORMATION

Polish EXCELLENT
Symmetry VERY GOOD
Fluorescence NONE
Inscription(s) LABGROWN IGI LG528231450

Comments: This Laboratory Grown Diamond was created by Chemical Vapor Deposition (CVD) growth process and may include post-growth treatment. Type IIa



LASERSCRIBE SM
Sample Image Used



May 30, 2022
IGI Report No. LG528231450
ROUND BRILLIANT
7.61 - 7.66 X 4.67 MM
Carat Weight 1.66 CARAT
Color Grade K
Clarity Grade VS 2
Cut Grade IDEAL
Depth 61.2%
Table 58%
Girdle Thin To Medium (Faceted)
Culet Pointed
Polish EXCELLENT
Symmetry VERY GOOD
Fluorescence NONE
Inscription(s) LABGROWN IGI LG528231450
Comments: This Laboratory Grown Diamond was created by Chemical Vapor Deposition (CVD) growth process and may include post-growth treatment. Type IIa