



**INTERNATIONAL  
GEMOLOGICAL  
INSTITUTE**

**ELECTRONIC COPY**

**LABORATORY GROWN  
DIAMOND REPORT**

**IGI LABORATORY GROWN  
DIAMOND ID REPORT**

May 26, 2022  
IGI Report Number **LG528233457**  
**SQUARE CUSHION MODIFIED  
BRILLIANT**  
**5.58 X 5.31 X 3.49 MM**  
Carat Weight 0.91 CARAT  
Color Grade H  
Clarity Grade VVS 1  
Polish EXCELLENT  
Symmetry EXCELLENT  
Fluorescence NONE  
Inscription(s) LABGROWN IGI  
LG528233457

**LABORATORY GROWN DIAMOND REPORT**

**IGI LABORATORY GROWN DIAMOND IDENTIFICATION REPORT**

May 26, 2022  
IGI Report Number LG528233457  
Description LABORATORY GROWN DIAMOND  
Shape and Cutting Style SQUARE CUSHION MODIFIED BRILLIANT  
Measurements 5.58 X 5.31 X 3.49 MM

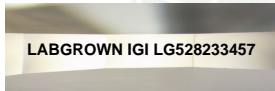
**GRADING RESULTS**

Carat Weight 0.91 CARAT  
Color Grade H  
Clarity Grade VVS 1

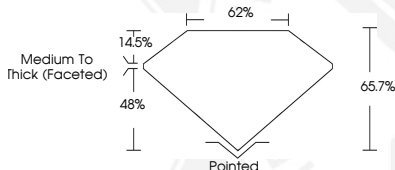
**ADDITIONAL GRADING INFORMATION**

Polish EXCELLENT  
Symmetry EXCELLENT  
Fluorescence NONE  
Inscription(s) LABGROWN IGI LG528233457

Comments: This Laboratory Grown Diamond was created by Chemical Vapor Deposition (CVD) growth process and may include post-growth treatment.  
Type IIa



**LASERSCRIBE<sup>SM</sup>**  
Sample Images Used



Comments: This Laboratory Grown Diamond was created by Chemical Vapor Deposition (CVD) growth process and may include post-growth treatment.  
Type IIa

**IGI LABORATORY GROWN  
DIAMOND ID REPORT**

May 26, 2022  
IGI Report Number **LG528233457**  
**SQUARE CUSHION MODIFIED  
BRILLIANT**  
**5.58 X 5.31 X 3.49 MM**  
Carat Weight 0.91 CARAT  
Color Grade H  
Clarity Grade VVS 1  
Polish EXCELLENT  
Symmetry EXCELLENT  
Fluorescence NONE  
Inscription(s) LABGROWN IGI  
LG528233457

Comments: This Laboratory Grown Diamond was created by Chemical Vapor Deposition (CVD) growth process and may include post-growth treatment.  
Type IIa

THIS DOCUMENT WAS PRODUCED WITH THE FOLLOWING SECURITY MEASURES: SPECIAL DOCUMENT PAPER, INK SCREENS, WATERMARK, BACKGROUND DESIGN, HOLOGRAM AND OTHER SECURITY FEATURES NOT LISTED AND DO EXCEED DOCUMENT SECURITY INDUSTRY GUIDELINES.

For terms & conditions and to verify this report, please visit [www.igi.org](http://www.igi.org)