



ELECTRONIC COPY

LABORATORY GROWN DIAMOND REPORT

June 10, 2022
IGI Report Number LG528233809
Description LABORATORY GROWN DIAMOND
Shape and Cutting Style ROUND BRILLIANT
Measurements 7.67 - 7.70 X 4.75 MM

GRADING RESULTS

Carat Weight 1.72 CARAT
Color Grade I
Clarity Grade SI 2
Cut Grade IDEAL

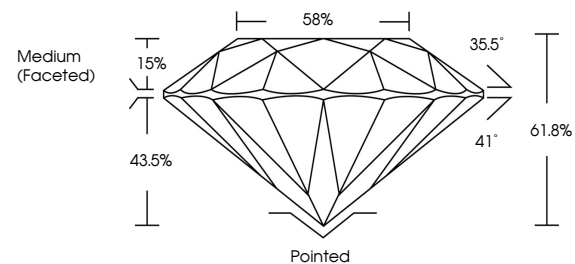
ADDITIONAL GRADING INFORMATION

Polish EXCELLENT
Symmetry EXCELLENT
Fluorescence NONE
Inscription(s) LABGROWN IGI LG528233809

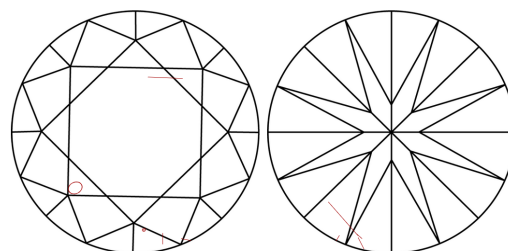
Comments: This Laboratory Grown Diamond was created by Chemical Vapor Deposition (CVD) growth process and may include post-growth treatment. Type IIa

LG528233809

PROPORTIONS



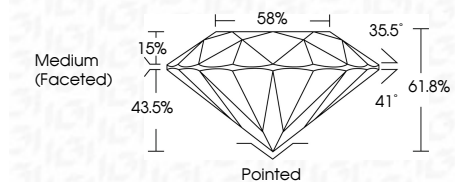
CLARITY CHARACTERISTICS



KEY TO SYMBOLS

Red symbols indicate internal characteristics.
Green symbols indicate external characteristics.

June 10, 2022
IGI Report Number LG528233809
Description LABORATORY GROWN DIAMOND
Shape and Cutting Style ROUND BRILLIANT
Measurements 7.67 - 7.70 X 4.75 MM
GRADING RESULTS
Carat Weight 1.72 CARAT
Color Grade I
Clarity Grade SI 2
Cut Grade IDEAL



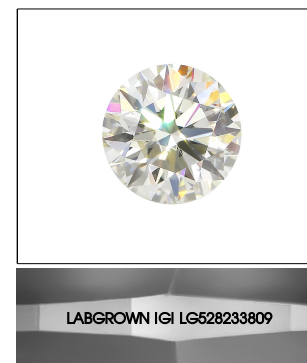
ADDITIONAL GRADING INFORMATION

Polish EXCELLENT
Symmetry EXCELLENT
Fluorescence NONE
Inscription(s) LABGROWN IGI LG528233809

Comments: This Laboratory Grown Diamond was created by Chemical Vapor Deposition (CVD) growth process and may include post-growth treatment. Type IIa

GRADING SCALES

Table with 2 columns: COLOR GRADING SCALE and CLARITY (10x) GRADING SCALE. Rows include color grades (CL, NC, FT, VLT, LT) and clarity grades (FL, IF, VVS, VS, SI, I).



LASERSCRIBE SM
Sample Image Used



Summary table of report details: IGI Report No. LG528233809, ROUND BRILLIANT, 7.67 - 7.70 X 4.75 MM, 1.72 CARAT, Color Grade I, Clarity Grade SI 2, Cut Grade IDEAL, Depth 61.8%, Table 58%, Girdle Medium (Faceted), Culet Pointed, Polish EXCELLENT, Symmetry EXCELLENT, Fluorescence NONE, Inscription(s) LABGROWN IGI LG528233809, Comments: This Laboratory Grown Diamond was created by Chemical Vapor Deposition (CVD) growth process and may include post-growth treatment. Type IIa