

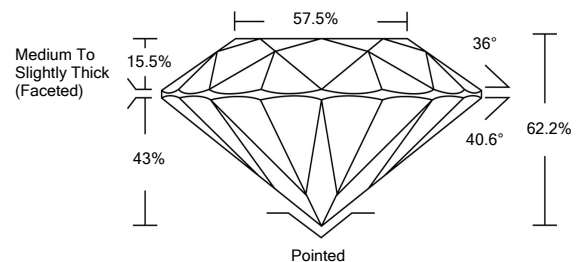


ELECTRONIC COPY

LABORATORY GROWN DIAMOND REPORT

LG528236200

PROPORTIONS



GRADING SCALES

COLOR GRADING SCALE	CL	NC	FT	VLT	LT	
	COLORLESS D-F	NEAR COLORLESS G-J	FAINT K-M	VERY LIGHT N-R	LIGHT S-Z	
CLARITY (10x) GRADING SCALE	FL	IF	VVS	VS	SI	I
	FLAWLESS INTERNALLY FLAWLESS	VERY VERY SLIGHTLY INCLUDED	VERY SLIGHTLY INCLUDED	SLIGHTLY INCLUDED	INCLUDED	

May 12, 2022

IGI Report Number

LG528236200

Description

**LABORATORY GROWN
DIAMOND**

Shape and Cutting Style

ROUND BRILLIANT

Measurements

7.26 - 7.31 X 4.54 MM

GRADING RESULTS

Carat Weight

1.50 CARAT

Color Grade

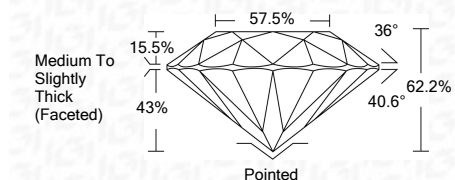
D

Clarity Grade

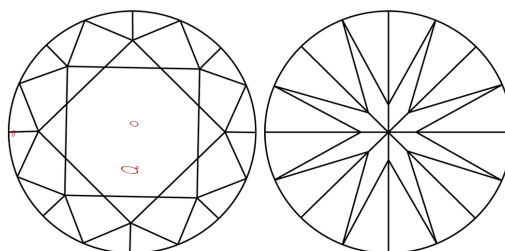
SI 1

Cut Grade

IDEAL

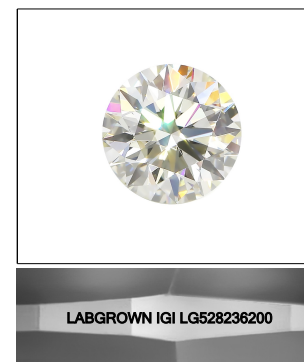


CLARITY CHARACTERISTICS



KEY TO SYMBOLS

Red symbols indicate internal characteristics.
Green symbols indicate external characteristics.



LASERSCRIBESM

Sample Image Used

ADDITIONAL GRADING INFORMATION

Polish

EXCELLENT

Symmetry

EXCELLENT

Fluorescence

NONE

Inscription(s)

LABGROWN IGI LG528236200

Comments: As Grown - No indication of post-growth treatment.
This Laboratory Grown Diamond was created by High Pressure High Temperature (HPHT) growth process.
Type II

May 12, 2022

IGI Report Number

LG528236200

Description

**LABORATORY GROWN
DIAMOND**

Shape and Cutting Style

ROUND BRILLIANT

Measurements

7.26 - 7.31 X 4.54 MM

GRADING RESULTS

Carat Weight

1.50 CARAT

Color Grade

D

Clarity Grade

SI 1

Cut Grade

IDEAL

ADDITIONAL GRADING INFORMATION

Polish

EXCELLENT

Symmetry

EXCELLENT

Fluorescence

NONE

Inscription(s)

LABGROWN IGI LG528236200

Comments: As Grown - No indication of post-growth treatment.
This Laboratory Grown Diamond was created by High Pressure High Temperature (HPHT) growth process.
Type II



IGI

May 12, 2022	IGI Report No. LG528236200	1.50 CARAT	D	SI 1	IDEAL	62.2%	57.5%	Medium To Slightly Thick (Faceted)	Pointed	EXCELLENT	EXCELLENT	NONE	LABGROWN IGI LG528236200	As Grown - No indication of post-growth treatment. This Laboratory Grown Diamond was created by High Pressure High Temperature (HPHT) growth process. Type II	
IGI Report No. LG528236200	ROUND BRILLIANT	7.26 - 7.31 X 4.54 MM	1.50 CARAT	D	SI 1	IDEAL	62.2%	57.5%	Medium To Slightly Thick (Faceted)	Pointed	EXCELLENT	EXCELLENT	NONE	LABGROWN IGI LG528236200	
May 12, 2022	IGI Report No. LG528236200	ROUND BRILLIANT	7.26 - 7.31 X 4.54 MM	1.50 CARAT	D	SI 1	IDEAL	62.2%	57.5%	Medium To Slightly Thick (Faceted)	Pointed	EXCELLENT	EXCELLENT	NONE	LABGROWN IGI LG528236200
IGI Report No. LG528236200	ROUND BRILLIANT	7.26 - 7.31 X 4.54 MM	1.50 CARAT	D	SI 1	IDEAL	62.2%	57.5%	Medium To Slightly Thick (Faceted)	Pointed	EXCELLENT	EXCELLENT	NONE	LABGROWN IGI LG528236200	