



**INTERNATIONAL  
GEMOLOGICAL  
INSTITUTE**

**LABORATORY GROWN DIAMOND REPORT**

**IGI LABORATORY GROWN DIAMOND IDENTIFICATION REPORT**

May 14, 2022  
 IGI Report Number **LG528236234**  
 Description **LABORATORY GROWN DIAMOND**  
 Shape and Cutting Style **CUSHION BRILLIANT**  
 Measurements **6.37 X 4.88 X 3.38 MM**

**GRADING RESULTS**

Carat Weight **0.91 CARAT**  
 Color Grade **D**  
 Clarity Grade **VS 1**

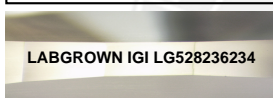
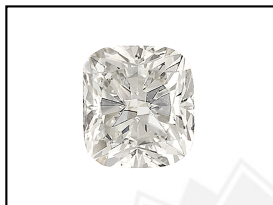
**ADDITIONAL GRADING INFORMATION**

Polish **EXCELLENT**  
 Symmetry **EXCELLENT**  
 Fluorescence **NONE**  
 Inscription(s) **LABGROWN IGI LG528236234**

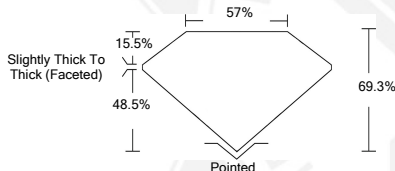
Comments: As Grown - No indication of post-growth treatment.  
 This Laboratory Grown Diamond was created by High Pressure High Temperature (HPHT) growth process.  
 Type II

**ELECTRONIC COPY** **LABORATORY GROWN  
DIAMOND REPORT**

**LG528236234**



**LASERSCRIBE<sup>SM</sup>**  
Sample Images Used



**IGI LABORATORY GROWN  
DIAMOND ID REPORT**

May 14, 2022  
 IGI Report Number **LG528236234**  
**CUSHION BRILLIANT**  
**6.37 X 4.88 X 3.38 MM**  
 Carat Weight **0.91 CARAT**  
 Color Grade **D**  
 Clarity Grade **VS 1**  
 Polish **EXCELLENT**  
 Symmetry **EXCELLENT**  
 Fluorescence **NONE**  
 Inscription(s) **LABGROWN IGI  
LG528236234**

Comments: As Grown - No indication of post-growth treatment.  
 This Laboratory Grown Diamond was created by High Pressure High Temperature (HPHT) growth process.  
 Type II

**IGI LABORATORY GROWN  
DIAMOND ID REPORT**

May 14, 2022  
 IGI Report Number **LG528236234**  
**CUSHION BRILLIANT**  
**6.37 X 4.88 X 3.38 MM**  
 Carat Weight **0.91 CARAT**  
 Color Grade **D**  
 Clarity Grade **VS 1**  
 Polish **EXCELLENT**  
 Symmetry **EXCELLENT**  
 Fluorescence **NONE**  
 Inscription(s) **LABGROWN IGI  
LG528236234**

Comments: As Grown - No indication of post-growth treatment.  
 This Laboratory Grown Diamond was created by High Pressure High Temperature (HPHT) growth process.  
 Type II

THIS DOCUMENT WAS PRODUCED WITH THE FOLLOWING SECURITY MEASURES: SPECIAL DOCUMENT PAPER, INK SCREENS, WATERMARK, BACKGROUND DESIGN, HOLOGRAM AND OTHER SECURITY FEATURES NOT LISTED AND DO EXCEED DOCUMENT SECURITY INDUSTRY GUIDELINES.

For Terms & Conditions and to verify this report, please visit [www.igi.org](http://www.igi.org)