



# INTERNATIONAL GEMOLOGICAL INSTITUTE

## LABORATORY GROWN DIAMOND REPORT

### IGI LABORATORY GROWN DIAMOND IDENTIFICATION REPORT

May 17, 2022  
IGI Report Number LG528236267  
Description LABORATORY GROWN DIAMOND  
Shape and Cutting Style ROUND BRILLIANT  
Measurements 5.91 - 5.94 X 3.61 MM

### GRADING RESULTS

Carat Weight 0.77 CARAT  
Color Grade E  
Clarity Grade VS 1  
Cut Grade IDEAL

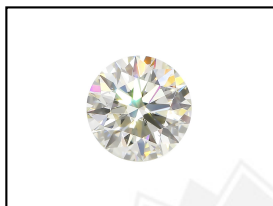
### ADDITIONAL GRADING INFORMATION

Polish EXCELLENT  
Symmetry EXCELLENT  
Fluorescence NONE  
Inscription(s) LABGROWN IGI LG528236267

Comments: As Grown - No indication of post-growth treatment.  
This Laboratory Grown Diamond was created by High Pressure High Temperature (HPHT) growth process.  
Type II

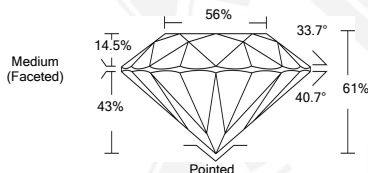
## ELECTRONIC COPY LABORATORY GROWN DIAMOND REPORT

LG528236267



LABGROWN IGI LG528236267

LASERSCRIBE<sup>SM</sup>  
Sample Images Used



### IGI LABORATORY GROWN DIAMOND ID REPORT

May 17, 2022  
IGI Report Number LG528236267  
**ROUND BRILLIANT**  
**5.91 - 5.94 X 3.61 MM**  
Carat Weight 0.77 CARAT  
Color Grade E  
Clarity Grade VS 1  
Cut Grade IDEAL  
Polish EXCELLENT  
Symmetry EXCELLENT  
Fluorescence NONE  
Inscription(s) LABGROWN IGI LG528236267

Comments: As Grown - No indication of post-growth treatment.  
This Laboratory Grown Diamond was created by High Pressure High Temperature (HPHT) growth process.  
Type II

### IGI LABORATORY GROWN DIAMOND ID REPORT

May 17, 2022  
IGI Report Number LG528236267  
**ROUND BRILLIANT**  
**5.91 - 5.94 X 3.61 MM**  
Carat Weight 0.77 CARAT  
Color Grade E  
Clarity Grade VS 1  
Cut Grade IDEAL  
Polish EXCELLENT  
Symmetry EXCELLENT  
Fluorescence NONE  
Inscription(s) LABGROWN IGI LG528236267

Comments: As Grown - No indication of post-growth treatment.  
This Laboratory Grown Diamond was created by High Pressure High Temperature (HPHT) growth process.  
Type II



THIS DOCUMENT WAS PRODUCED WITH THE FOLLOWING SECURITY MEASURES: SPECIAL DOCUMENT PAPER, INK SCREENS, WATERMARK, BACKGROUND DESIGN, HOLOGRAM AND OTHER SECURITY FEATURES NOT LISTED AND DO EXCEED DOCUMENT SECURITY INDUSTRY GUIDELINES.

For Terms & Conditions and to verify this report, please visit [www.igi.org](http://www.igi.org)