



ELECTRONIC COPY

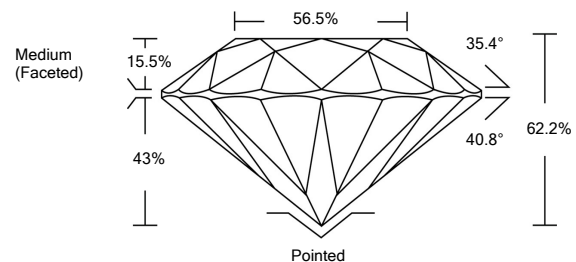
LG528238116

LABORATORY GROWN DIAMOND REPORT

GRADING SCALES

| COLOR GRADING SCALE | CL | NC | FT | VL | LT | |
|-----------------------------|------------------------------|-----------------------------|------------------------|-------------------|-----------|---|
| | COLORLESS D-F | NEAR COLORLESS G-J | FAINT K-M | VERY LIGHT N-R | LIGHT S-Z | |
| CLARITY (10x) GRADING SCALE | FL | IF | VVS | VS | SI | I |
| | FLAWLESS INTERNALLY FLAWLESS | VERY VERY SLIGHTLY INCLUDED | VERY SLIGHTLY INCLUDED | SLIGHTLY INCLUDED | INCLUDED | |

PROPORTIONS



May 15, 2022

IGI Report Number

LG528238116

Description

**LABORATORY GROWN
DIAMOND**

Shape and Cutting Style

ROUND BRILLIANT

Measurements

10.53 - 10.60 X 6.58 MM

GRADING RESULTS

Carat Weight

4.53 CARATS

Color Grade

E

Clarity Grade

VS 1

Cut Grade

IDEAL

May 15, 2022

IGI Report Number

LG528238116

Description

**LABORATORY GROWN
DIAMOND**

Shape and Cutting Style

ROUND BRILLIANT

Measurements

10.53 - 10.60 X 6.58 MM

GRADING RESULTS

Carat Weight

4.53 CARATS

Color Grade

E

Clarity Grade

VS 1

Cut Grade

IDEAL

ADDITIONAL GRADING INFORMATION

Polish

EXCELLENT

Symmetry

EXCELLENT

Fluorescence

NONE

Inscription(s)

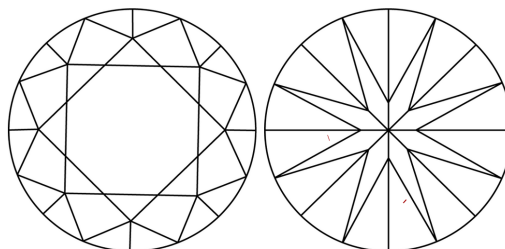
LABGROWN IGI LG528238116

Comments: As Grown - No indication of post-growth treatment.

This Laboratory Grown Diamond was created by High Pressure High Temperature (HPHT) growth process.

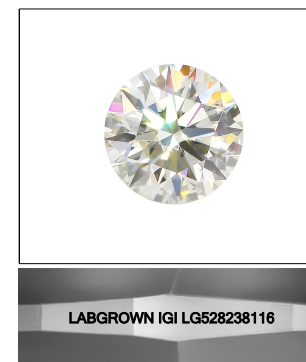
Type II

CLARITY CHARACTERISTICS



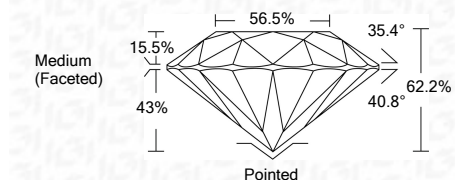
KEY TO SYMBOLS

Red symbols indicate internal characteristics.
Green symbols indicate external characteristics.



LASERSCRIBESM

Sample Image Used



ADDITIONAL GRADING INFORMATION

Polish

EXCELLENT

Symmetry

EXCELLENT

Fluorescence

NONE

Inscription(s)

LABGROWN IGI LG528238116

Comments: As Grown - No indication of post-growth treatment.

This Laboratory Grown Diamond was created by High Pressure High Temperature (HPHT) growth process.

Type II



IGI

| | | | | |
|-----------------|----------------------------|-------------|------------------|---|
| May 15, 2022 | IGI Report No. LG528238116 | 4.53 CARATS | E | Pointed |
| ROUND BRILLIANT | 10.53 - 10.60 X 6.58 MM | VS 1 | EXCELLENT | EXCELLENT |
| Carat Weight | Color Grade | Cut Grade | Depth | Table |
| | | | 62.2% | 56.5% |
| | | | Medium (Faceted) | |
| | | | Polish | EXCELLENT |
| | | | Symmetry | EXCELLENT |
| | | | Fluorescence | NONE |
| | | | Inscription(s) | LABGROWN IGI LG528238116 |
| | | | Comments: | As Grown - No indication of post-growth treatment. This Laboratory Grown Diamond was created by High Pressure High Temperature (HPHT) growth process. Type II |