

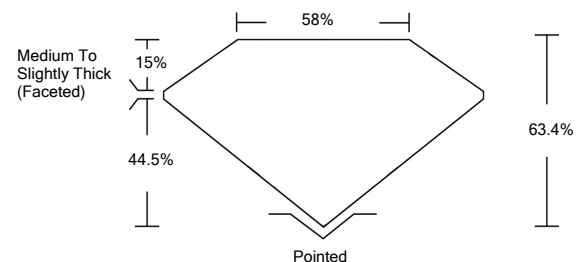


**ELECTRONIC COPY**

**LABORATORY GROWN DIAMOND REPORT**

LG528241921

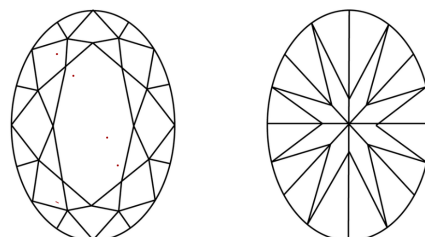
**PROPORTIONS**



**GRADING SCALES**

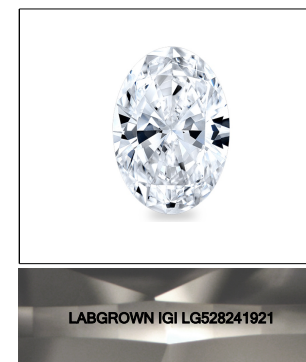
|                             |                              |                             |                        |                   |           |   |
|-----------------------------|------------------------------|-----------------------------|------------------------|-------------------|-----------|---|
| COLOR GRADING SCALE         | CL                           | NC                          | FT                     | VLT               | LT        |   |
|                             | COLORLESS D-F                | NEAR COLORLESS G-J          | FAINT K-M              | VERY LIGHT N-R    | LIGHT S-Z |   |
| CLARITY (10x) GRADING SCALE | FL                           | IF                          | VVS                    | VS                | SI        | I |
|                             | FLAWLESS INTERNALLY FLAWLESS | VERY VERY SLIGHTLY INCLUDED | VERY SLIGHTLY INCLUDED | SLIGHTLY INCLUDED | INCLUDED  |   |

**CLARITY CHARACTERISTICS**



**KEY TO SYMBOLS**

Red symbols indicate internal characteristics.  
Green symbols indicate external characteristics.



**LASERSCRIBE<sup>SM</sup>**  
Sample Image Used

May 10, 2022

IGI Report Number **LG528241921**

Description **LABORATORY GROWN DIAMOND**

Shape and Cutting Style **OVAL BRILLIANT**

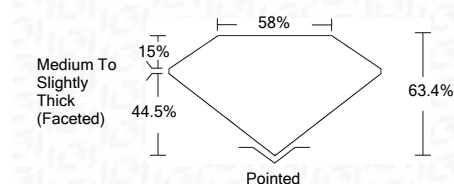
Measurements **10.40 X 7.13 X 4.52 MM**

**GRADING RESULTS**

Carat Weight **2.11 CARATS**

Color Grade **G**

Clarity Grade **VS 2**



**ADDITIONAL GRADING INFORMATION**

Polish **EXCELLENT**

Symmetry **EXCELLENT**

Fluorescence **NONE**

Inscription(s) **LABGROWN IGI LG528241921**

Comments: This Laboratory Grown Diamond was created by Chemical Vapor Deposition (CVD) growth process and may include post-growth treatment.  
Type IIa

May 10, 2022

IGI Report Number **LG528241921**

Description **LABORATORY GROWN DIAMOND**

Shape and Cutting Style **OVAL BRILLIANT**

Measurements **10.40 X 7.13 X 4.52 MM**

**GRADING RESULTS**

Carat Weight **2.11 CARATS**

Color Grade **G**

Clarity Grade **VS 2**

**ADDITIONAL GRADING INFORMATION**

Polish **EXCELLENT**

Symmetry **EXCELLENT**

Fluorescence **NONE**

Inscription(s) **LABGROWN IGI LG528241921**

Comments: This Laboratory Grown Diamond was created by Chemical Vapor Deposition (CVD) growth process and may include post-growth treatment.  
Type IIa



|                            |              |                                    |
|----------------------------|--------------|------------------------------------|
| IGI Report No. LG528241921 | 2.11 CARATS  | G                                  |
| OVAL BRILLIANT             | VS 2         | 63.4%                              |
| 10.40 X 7.13 X 4.52 MM     | 58%          | Medium To Slightly Thick (Faceted) |
| Carat Weight               | Pointed      |                                    |
| Color Grade                | EXCELLENT    |                                    |
| Clarity Grade              | EXCELLENT    |                                    |
| Depth                      | EXCELLENT    |                                    |
| Table                      | NONE         |                                    |
| Girdle                     | LABGROWN IGI |                                    |
| Culet                      | LG528241921  |                                    |
| Polish                     |              |                                    |
| Symmetry                   |              |                                    |
| Fluorescence               |              |                                    |
| Inscription(s)             |              |                                    |
| Comments:                  |              |                                    |

This Laboratory Grown Diamond was created by Chemical Vapor Deposition (CVD) growth process and may include post-growth treatment.  
Type IIa