

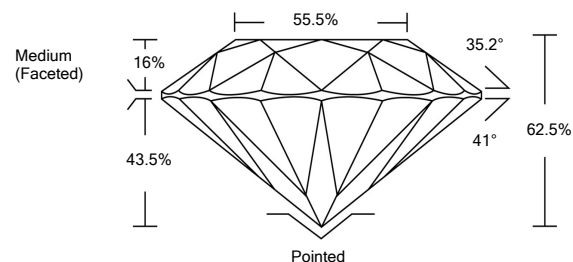


ELECTRONIC COPY

LABORATORY GROWN DIAMOND REPORT

LG528242159

PROPORTIONS



GRADING SCALES

COLOR GRADING SCALE	CL	NC	FT	VL	LT	
	COLORLESS D-F	NEAR COLORLESS G-J	FAINT K-M	VERY LIGHT N-R	LIGHT S-Z	
CLARITY (10x) GRADING SCALE	FL	IF	VVS	VS	SI	I
	FLAWLESS INTERNALLY FLAWLESS	VERY VERY SLIGHTLY INCLUDED	VERY SLIGHTLY INCLUDED	SLIGHTLY INCLUDED	INCLUDED	

May 14, 2022

IGI Report Number

LG528242159

Description

**LABORATORY GROWN
DIAMOND**

Shape and Cutting Style

ROUND BRILLIANT

Measurements

8.66 - 8.69 X 5.43 MM

GRADING RESULTS

Carat Weight

2.51 CARATS

Color Grade

I

Clarity Grade

VS 1

Cut Grade

IDEAL

May 14, 2022

IGI Report Number

LG528242159

Description

**LABORATORY GROWN
DIAMOND**

Shape and Cutting Style

ROUND BRILLIANT

Measurements

8.66 - 8.69 X 5.43 MM

GRADING RESULTS

Carat Weight

2.51 CARATS

Color Grade

I

Clarity Grade

VS 1

Cut Grade

IDEAL

ADDITIONAL GRADING INFORMATION

Polish

EXCELLENT

Symmetry

EXCELLENT

Fluorescence

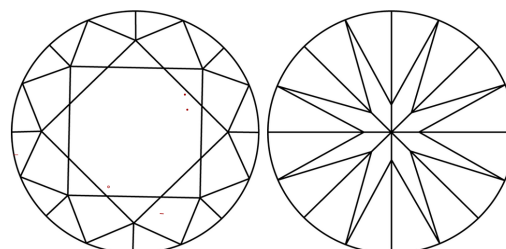
NONE

Inscription(s)

LABGROWN IGI LG528242159

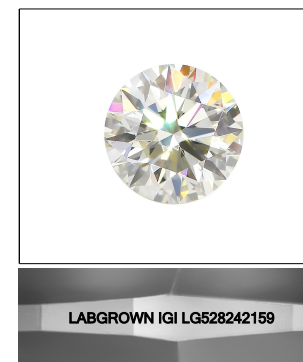
Comments: This Laboratory Grown Diamond was created by Chemical Vapor Deposition (CVD) growth process and may include post-growth treatment.
Type IIa

CLARITY CHARACTERISTICS



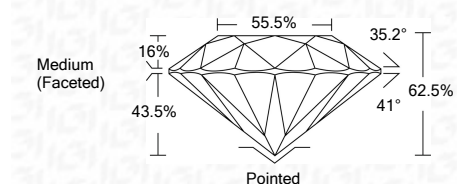
KEY TO SYMBOLS

Red symbols indicate internal characteristics.
Green symbols indicate external characteristics.



LASERSCRIBESM

Sample Image Used



ADDITIONAL GRADING INFORMATION

Polish

EXCELLENT

Symmetry

EXCELLENT

Fluorescence

NONE

Inscription(s)

LABGROWN IGI LG528242159

Comments: This Laboratory Grown Diamond was created by Chemical Vapor Deposition (CVD) growth process and may include post-growth treatment.
Type IIa



IGI

May 14, 2022	IGI Report No. LG528242159	2.51 CARATS	I
ROUND BRILLIANT	8.66 - 8.69 X 5.43 MM	VS 1	IDEAL
Color Grade	Depth	Cut Grade	Table
Medium (Faceted)	62.5%	IDEAL	55.5%
			Medium (Faceted)
Culet	Polish	Symmetry	Fluorescence
	EXCELLENT	EXCELLENT	NONE
			LABGROWN IGI LG528242159
			Inscription(s)
			Comments: This Laboratory Grown Diamond was created by Chemical Vapor Deposition (CVD) growth process and may include post-growth treatment. Type IIa