

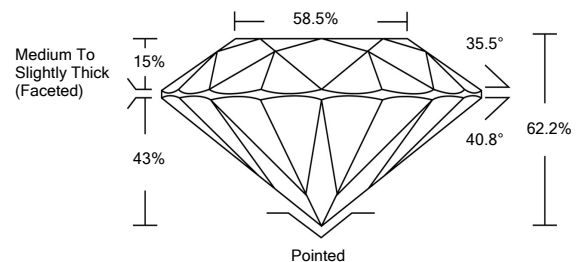


ELECTRONIC COPY

LABORATORY GROWN DIAMOND REPORT

LG528242174

PROPORTIONS



GRADING SCALES

Table with 2 rows: COLOR GRADING SCALE (CL, NC, FT, VLT, LT) and CLARITY (10x) GRADING SCALE (FL, IF, VVS, VS, SI, I).

May 14, 2022

IGI Report Number

LG528242174

Description

LABORATORY GROWN DIAMOND

Shape and Cutting Style

ROUND BRILLIANT

Measurements

9.08 - 9.13 X 5.66 MM

GRADING RESULTS

Carat Weight

2.93 CARATS

Color Grade

J

Clarity Grade

VS 1

Cut Grade

IDEAL

May 14, 2022

IGI Report Number

LG528242174

Description

LABORATORY GROWN DIAMOND

Shape and Cutting Style

ROUND BRILLIANT

Measurements

9.08 - 9.13 X 5.66 MM

GRADING RESULTS

Carat Weight

2.93 CARATS

Color Grade

J

Clarity Grade

VS 1

Cut Grade

IDEAL

ADDITIONAL GRADING INFORMATION

Polish

EXCELLENT

Symmetry

EXCELLENT

Fluorescence

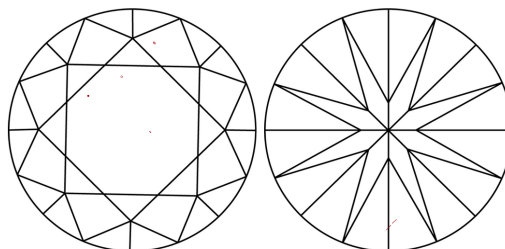
NONE

Inscription(s)

LABGROWN IGI LG528242174

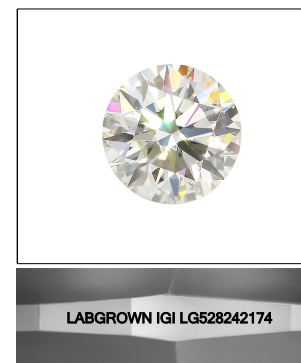
Comments: This Laboratory Grown Diamond was created by Chemical Vapor Deposition (CVD) growth process and may include post-growth treatment. Type IIa

CLARITY CHARACTERISTICS



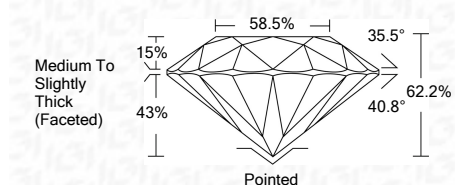
KEY TO SYMBOLS

Red symbols indicate internal characteristics. Green symbols indicate external characteristics.



LASERSCRIBE SM

Sample Image Used



ADDITIONAL GRADING INFORMATION

Polish

EXCELLENT

Symmetry

EXCELLENT

Fluorescence

NONE

Inscription(s)

LABGROWN IGI LG528242174

Comments: This Laboratory Grown Diamond was created by Chemical Vapor Deposition (CVD) growth process and may include post-growth treatment. Type IIa



IGI



Summary table of report details: IGI Report No. LG528242174, ROUND BRILLIANT, 9.08 - 9.13 X 5.66 MM, 2.93 CARATS, J, VS 1, IDEAL, 62.2%, 58.5%, Medium To Slightly Thick (Faceted), Excellent Polish, Excellent Symmetry, None Fluorescence, Labgrown IGI LG528242174 Inscription(s).