



**INTERNATIONAL
GEMOLOGICAL
INSTITUTE**

LABORATORY GROWN DIAMOND REPORT

IGI LABORATORY GROWN DIAMOND IDENTIFICATION REPORT

May 18, 2022
 IGI Report Number **LG528298734**
 Description **LABORATORY GROWN DIAMOND**
 Shape and Cutting Style **PEAR BRILLIANT**
 Measurements **6.50 X 4.17 X 2.64 MM**

GRADING RESULTS

Carat Weight **0.43 CARAT**
 Color Grade **F**
 Clarity Grade **VVS 1**

ADDITIONAL GRADING INFORMATION

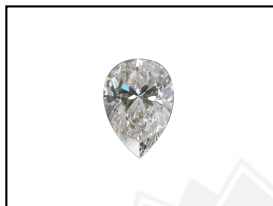
Polish **EXCELLENT**
 Symmetry **EXCELLENT**
 Fluorescence **NONE**
 Inscription(s) **LABGROWN IGI LG528298734**

Comments: As Grown - No indication of post-growth treatment.
 This Laboratory Grown Diamond was created by High Pressure High Temperature (HPHT) growth process.
 Type II

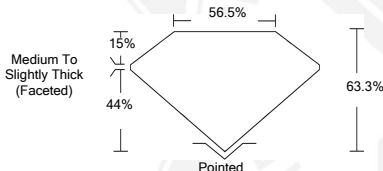
ELECTRONIC COPY

**LABORATORY GROWN
DIAMOND REPORT**

LG528298734



LASERSCRIBESM
Sample Images Used



**IGI LABORATORY GROWN
DIAMOND ID REPORT**

May 18, 2022
 IGI Report Number **LG528298734**
PEAR BRILLIANT
6.50 X 4.17 X 2.64 MM
 Carat Weight **0.43 CARAT**
 Color Grade **F**
 Clarity Grade **VVS 1**
 Polish **EXCELLENT**
 Symmetry **EXCELLENT**
 Fluorescence **NONE**
 Inscription(s) **LABGROWN IGI
LG528298734**

Comments: As Grown - No indication of post-growth treatment.
 This Laboratory Grown Diamond was created by High Pressure High Temperature (HPHT) growth process.
 Type II

**IGI LABORATORY GROWN
DIAMOND ID REPORT**

May 18, 2022
 IGI Report Number **LG528298734**
PEAR BRILLIANT
6.50 X 4.17 X 2.64 MM
 Carat Weight **0.43 CARAT**
 Color Grade **F**
 Clarity Grade **VVS 1**
 Polish **EXCELLENT**
 Symmetry **EXCELLENT**
 Fluorescence **NONE**
 Inscription(s) **LABGROWN IGI
LG528298734**

Comments: As Grown - No indication of post-growth treatment.
 This Laboratory Grown Diamond was created by High Pressure High Temperature (HPHT) growth process.
 Type II

THIS DOCUMENT WAS PRODUCED WITH THE FOLLOWING SECURITY MEASURES: SPECIAL DOCUMENT PAPER, INK SCREENS, WATERMARK, BACKGROUND DESIGN, HOLOGRAM AND OTHER SECURITY FEATURES NOT LISTED AND DO EXCEED DOCUMENT SECURITY INDUSTRY GUIDELINES.

For terms & conditions and to verify this report, please visit www.igi.org