



**INTERNATIONAL
GEMOLOGICAL
INSTITUTE**

ELECTRONIC COPY

**LABORATORY GROWN
DIAMOND REPORT**

**IGI LABORATORY GROWN
DIAMOND ID REPORT**

May 24, 2022
IGI Report Number **LG528298919**
OVAL BRILLIANT
5.46 X 3.91 X 2.39 MM
Carat Weight 0.32 CARAT
Color Grade FANCY BLUE
Clarity Grade VVS 2
Polish EXCELLENT
Symmetry EXCELLENT
Fluorescence VERY SLIGHT
Inscription(s) LABGROWN IGI
LG528298919

LABORATORY GROWN DIAMOND REPORT

IGI LABORATORY GROWN DIAMOND IDENTIFICATION REPORT

May 24, 2022
IGI Report Number LG528298919
Description LABORATORY GROWN DIAMOND
Shape and Cutting Style **OVAL BRILLIANT**
Measurements 5.46 X 3.91 X 2.39 MM

GRADING RESULTS

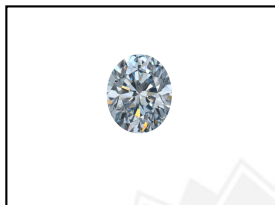
Carat Weight 0.32 CARAT
Color Grade FANCY BLUE
Clarity Grade VVS 2

ADDITIONAL GRADING INFORMATION

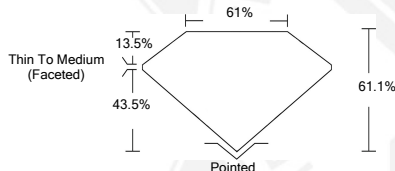
Polish EXCELLENT
Symmetry EXCELLENT
Fluorescence VERY SLIGHT
Inscription(s) LABGROWN IGI LG528298919

Comments: As Grown - No indication of post-growth treatment.
This Laboratory Grown Diamond was created by High Pressure High Temperature (HPHT) growth process.

LG528298919



LASERSCRIBESM
Sample Images Used



Comments: As Grown - No indication of post-growth treatment.
This Laboratory Grown Diamond was created by High Pressure High Temperature (HPHT) growth process.

**IGI LABORATORY GROWN
DIAMOND ID REPORT**

May 24, 2022
IGI Report Number **LG528298919**
OVAL BRILLIANT
5.46 X 3.91 X 2.39 MM
Carat Weight 0.32 CARAT
Color Grade FANCY BLUE
Clarity Grade VVS 2
Polish EXCELLENT
Symmetry EXCELLENT
Fluorescence VERY SLIGHT
Inscription(s) LABGROWN IGI
LG528298919

Comments: As Grown - No indication of post-growth treatment.
This Laboratory Grown Diamond was created by High Pressure High Temperature (HPHT) growth process.

THIS DOCUMENT WAS PRODUCED WITH THE FOLLOWING SECURITY MEASURES: SPECIAL DOCUMENT PAPER, INK SCREENS, WATERMARK, BACKGROUND DESIGN, HOLOGRAM AND OTHER SECURITY FEATURES NOT LISTED AND DO EXCEED DOCUMENT SECURITY INDUSTRY GUIDELINES.

For terms & conditions and to verify this report, please visit www.igi.org