



**INTERNATIONAL
GEMOLOGICAL
INSTITUTE**

LABORATORY GROWN DIAMOND REPORT

IGI LABORATORY GROWN DIAMOND IDENTIFICATION REPORT

May 17, 2022
 IGI Report Number LG529243064
 Description LABORATORY GROWN DIAMOND
 Shape and Cutting Style CUT CORNERED RECTANGULAR
 MODIFIED BRILLIANT
 Measurements 6.33 X 4.42 X 2.92 MM

GRADING RESULTS

Carat Weight 0.70 CARAT
 Color Grade E
 Clarity Grade VVS 2

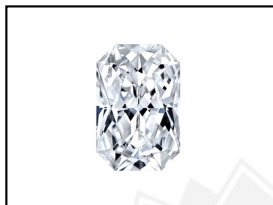
ADDITIONAL GRADING INFORMATION

Polish VERY GOOD
 Symmetry VERY GOOD
 Fluorescence NONE
 Inscription(s) LABGROWN IGI LG529243064

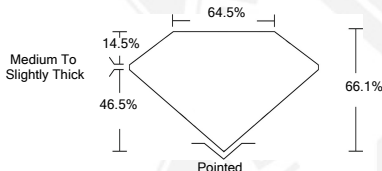
Comments: This Laboratory Grown Diamond was created by Chemical Vapor Deposition (CVD) growth process and may include post-growth treatment.
 Type IIa

**ELECTRONIC COPY LABORATORY GROWN
DIAMOND REPORT**

LG529243064



LASERSCRIBESM
Sample Images Used



**IGI LABORATORY GROWN
DIAMOND ID REPORT**

May 17, 2022
 IGI Report Number **LG529243064**
**CUT CORNERED
RECTANGULAR MODIFIED
BRILLIANT**
6.33 X 4.42 X 2.92 MM
 Carat Weight 0.70 CARAT
 Color Grade E
 Clarity Grade VVS 2
 Polish VERY GOOD
 Symmetry VERY GOOD
 Fluorescence NONE
 Inscription(s) LABGROWN IGI
 LG529243064

Comments: This Laboratory Grown Diamond was created by Chemical Vapor Deposition (CVD) growth process and may include post-growth treatment.
 Type IIa

**IGI LABORATORY GROWN
DIAMOND ID REPORT**

May 17, 2022
 IGI Report Number **LG529243064**
**CUT CORNERED
RECTANGULAR MODIFIED
BRILLIANT**
6.33 X 4.42 X 2.92 MM
 Carat Weight 0.70 CARAT
 Color Grade E
 Clarity Grade VVS 2
 Polish VERY GOOD
 Symmetry VERY GOOD
 Fluorescence NONE
 Inscription(s) LABGROWN IGI
 LG529243064

Comments: This Laboratory Grown Diamond was created by Chemical Vapor Deposition (CVD) growth process and may include post-growth treatment.
 Type IIa

THIS DOCUMENT WAS PRODUCED WITH THE FOLLOWING SECURITY MEASURES: SPECIAL DOCUMENT PAPER, INK SCREENS, WATERMARK, BACKGROUND DESIGN, HOLOGRAM AND OTHER SECURITY FEATURES NOT LISTED AND DO EXCEEDED DOCUMENT SECURITY INDUSTRY GUIDELINES.

For Terms & Conditions and to verify this report, please visit www.igi.org