



ELECTRONIC COPY

LABORATORY GROWN DIAMOND REPORT

May 18, 2022
IGI Report Number LG529244133
Description LABORATORY GROWN DIAMOND
Shape and Cutting Style ROUND BRILLIANT
Measurements 6.96 - 6.98 X 4.23 MM

GRADING RESULTS

Carat Weight 1.25 CARAT
Color Grade E
Clarity Grade VVS 2
Cut Grade IDEAL

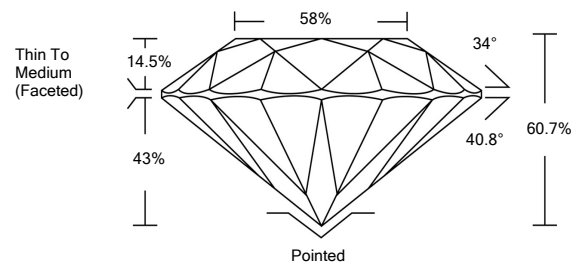
ADDITIONAL GRADING INFORMATION

Polish EXCELLENT
Symmetry EXCELLENT
Fluorescence NONE

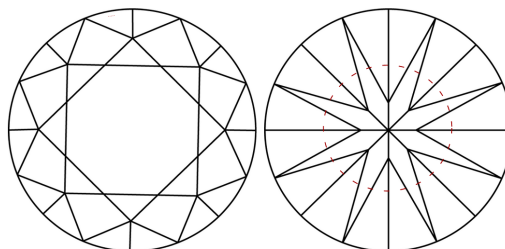
Inscription(s) LABGROWN IGI LG529244133
Comments: HEARTS & ARROWS
As Grown - No indication of post-growth treatment
This Laboratory Grown Diamond was created by Chemical Vapor Deposition (CVD) growth process
Type IIa

LG529244133

PROPORTIONS

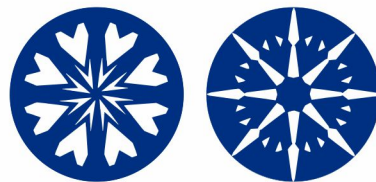


CLARITY CHARACTERISTICS



KEY TO SYMBOLS

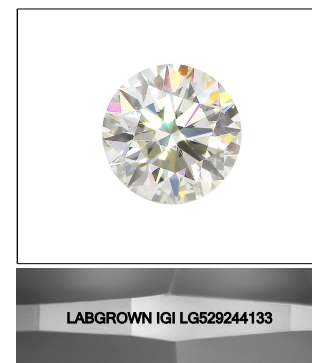
Red symbols indicate internal characteristics.
Green symbols indicate external characteristics.



www.igi.org

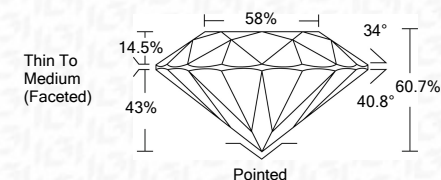
GRADING SCALES

Table with 2 rows: COLOR GRADING SCALE and CLARITY (10x) GRADING SCALE, listing various grades from Colorless to Light and Flawless Internally Flawless to Included.



LASERSCRIBE SM
Sample Image Used

May 18, 2022
IGI Report Number LG529244133
Description LABORATORY GROWN DIAMOND
Shape and Cutting Style ROUND BRILLIANT
Measurements 6.96 - 6.98 X 4.23 MM
GRADING RESULTS
Carat Weight 1.25 CARAT
Color Grade E
Clarity Grade VVS 2
Cut Grade IDEAL



ADDITIONAL GRADING INFORMATION

Polish EXCELLENT
Symmetry EXCELLENT
Fluorescence NONE

Inscription(s) LABGROWN IGI LG529244133

Comments: HEARTS & ARROWS
As Grown - No indication of post-growth treatment
This Laboratory Grown Diamond was created by Chemical Vapor Deposition (CVD) growth process
Type IIa



May 18, 2022
IGI Report No. LG529244133
ROUND BRILLIANT
6.96 - 6.98 X 4.23 MM
Carat Weight 1.25 CARAT
Color Grade E
Clarity Grade VVS 2
Cut Grade IDEAL
Depth 60.7%
Table 58%
Girdle Thin To Medium (Faceted)
Culet Pointed
Polish EXCELLENT
Symmetry EXCELLENT
Fluorescence NONE
Inscription(s) LABGROWN IGI LG529244133
Comments: HEARTS & ARROWS
As Grown - No indication of post-growth treatment
This Laboratory Grown Diamond was created by Chemical Vapor Deposition (CVD) growth process
Type IIa