



**ELECTRONIC COPY**

LG529246771

**LABORATORY GROWN DIAMOND REPORT**

May 14, 2022  
 IGI Report Number **LG529246771**  
 Description **LABORATORY GROWN  
DIAMOND**  
 Shape and Cutting Style **HEART BRILLIANT**  
 Measurements **8.40 X 10.05 X 6.10 MM**

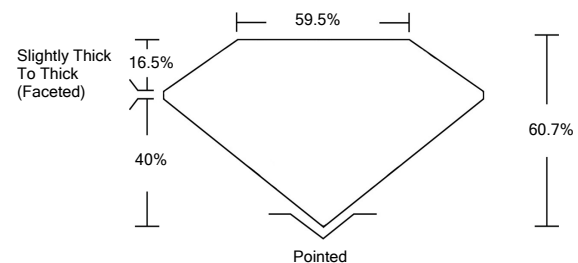
**GRADING RESULTS**

Carat Weight **3.00 CARATS**  
 Color Grade **G**  
 Clarity Grade **SI 1**

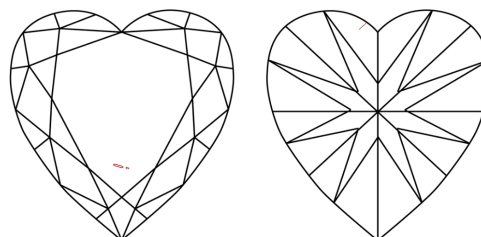
**ADDITIONAL GRADING INFORMATION**

Polish **EXCELLENT**  
 Symmetry **EXCELLENT**  
 Fluorescence **NONE**  
 Inscription(s) **LABGROWN IGI LG529246771**  
 Comments: As Grown - No indication of post-growth treatment. This Laboratory Grown Diamond was created by High Pressure High Temperature (HPHT) growth process. Type II

**PROPORTIONS**



**CLARITY CHARACTERISTICS**

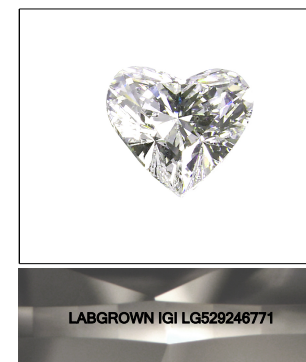


**KEY TO SYMBOLS**

Red symbols indicate internal characteristics.  
 Green symbols indicate external characteristics.

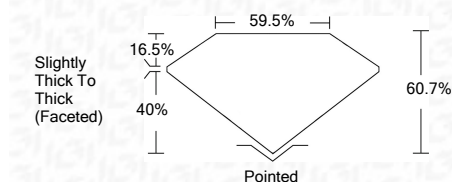
**GRADING SCALES**

| COLOR GRADING SCALE         | CL                           | NC                          | FT                     | VLT               | LT        |   |
|-----------------------------|------------------------------|-----------------------------|------------------------|-------------------|-----------|---|
|                             | COLORLESS D-F                | NEAR COLORLESS G-J          | FAINT K-M              | VERY LIGHT N-R    | LIGHT S-Z |   |
| CLARITY (10x) GRADING SCALE | FL                           | IF                          | VVS                    | VS                | SI        | I |
|                             | FLAWLESS INTERNALLY FLAWLESS | VERY VERY SLIGHTLY INCLUDED | VERY SLIGHTLY INCLUDED | SLIGHTLY INCLUDED | INCLUDED  |   |



**LASERSCRIBE<sup>SM</sup>**  
 Sample Image Used

May 14, 2022  
 IGI Report Number **LG529246771**  
 Description **LABORATORY GROWN  
DIAMOND**  
 Shape and Cutting Style **HEART BRILLIANT**  
 Measurements **8.40 X 10.05 X 6.10 MM**  
**GRADING RESULTS**  
 Carat Weight **3.00 CARATS**  
 Color Grade **G**  
 Clarity Grade **SI 1**



**ADDITIONAL GRADING INFORMATION**

Polish **EXCELLENT**  
 Symmetry **EXCELLENT**  
 Fluorescence **NONE**  
 Inscription(s) **LABGROWN IGI LG529246771**  
 Comments: As Grown - No indication of post-growth treatment. This Laboratory Grown Diamond was created by High Pressure High Temperature (HPHT) growth process. Type II



May 14, 2022  
 IGI Report No. LG529246771  
**HEART BRILLIANT**  
**8.40 X 10.05 X 6.10 MM**  
 Carat Weight **3.00 CARATS**  
 Color Grade **G**  
 Clarity Grade **SI 1**  
 Depth **60.7%**  
 Table **59.5%**  
 Girdle **Slightly Thick To Thick (Faceted)**  
 Culet **Pointed**  
 Polish **EXCELLENT**  
 Symmetry **EXCELLENT**  
 Fluorescence **NONE**  
 Inscription(s) **LABGROWN IGI LG529246771**  
 Comments:  
 As Grown - No indication of post-growth treatment. This Laboratory Grown Diamond was created by High Pressure High Temperature (HPHT) growth process. Type II