

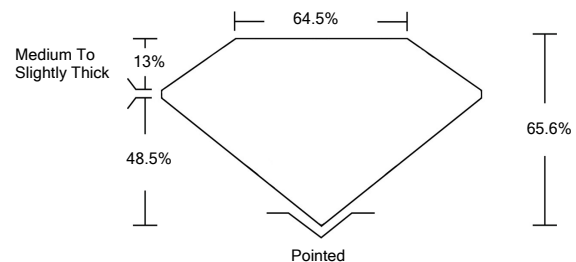


ELECTRONIC COPY

LABORATORY GROWN DIAMOND REPORT

LG529247034

PROPORTIONS



GRADING SCALES

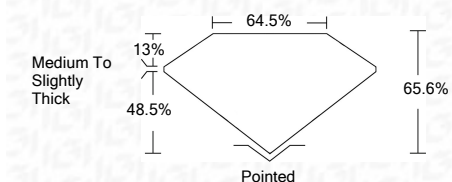
COLOR GRADING SCALE	CL	NC	FT	VL	LT	
	COLORLESS D-F	NEAR COLORLESS G-J	FAINT K-M	VERY LIGHT N-R	LIGHT S-Z	
CLARITY (10x) GRADING SCALE	FL	IF	VVS	VS	SI	I
	FLAWLESS INTERNALLY FLAWLESS	VERY VERY SLIGHTLY INCLUDED	VERY SLIGHTLY INCLUDED	SLIGHTLY INCLUDED	INCLUDED	

May 14, 2022
 IGI Report Number **LG529247034**
 Description **LABORATORY GROWN DIAMOND**
 Shape and Cutting Style **SQUARE EMERALD CUT**
 Measurements **9.58 X 9.56 X 6.27 MM**

May 14, 2022
 IGI Report Number **LG529247034**
 Description **LABORATORY GROWN DIAMOND**
 Shape and Cutting Style **SQUARE EMERALD CUT**
 Measurements **9.58 X 9.56 X 6.27 MM**
 GRADING RESULTS
 Carat Weight **5.14 CARATS**
 Color Grade **G**
 Clarity Grade **VS 2**

GRADING RESULTS

Carat Weight **5.14 CARATS**
 Color Grade **G**
 Clarity Grade **VS 2**

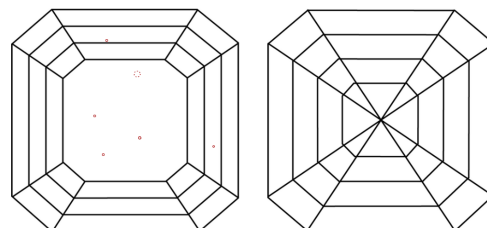


ADDITIONAL GRADING INFORMATION

Polish **EXCELLENT**
 Symmetry **EXCELLENT**
 Fluorescence **NONE**
 Inscription(s) **LABGROWN IGI LG529247034**

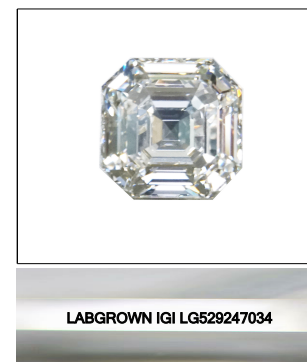
ADDITIONAL GRADING INFORMATION
 Polish **EXCELLENT**
 Symmetry **EXCELLENT**
 Fluorescence **NONE**
 Inscription(s) **LABGROWN IGI LG529247034**
 Comments: This Laboratory Grown Diamond was created by Chemical Vapor Deposition (CVD) growth process and may include post-growth treatment.
 Type IIa

CLARITY CHARACTERISTICS



KEY TO SYMBOLS

Red symbols indicate internal characteristics.
 Green symbols indicate external characteristics.



LASERSCRIBESM
 Sample Image Used



IGI

May 14, 2022
 IGI Report No. **LG529247034**
SQUARE EMERALD CUT
9.58 X 9.56 X 6.27 MM
 Carat Weight **5.14 CARATS**
 Color Grade **G**
 Clarity Grade **VS 2**
 Depth **65.6%**
 Table **64.5%**
 Girdle **Medium To Slightly Thick**
 Culet **Pointed**
 Polish **EXCELLENT**
 Symmetry **EXCELLENT**
 Fluorescence **NONE**
 Inscription(s) **LABGROWN IGI LG529247034**
 Comments: **This Laboratory Grown Diamond was created by Chemical Vapor Deposition (CVD) growth process and may include post-growth treatment. Type IIa**