

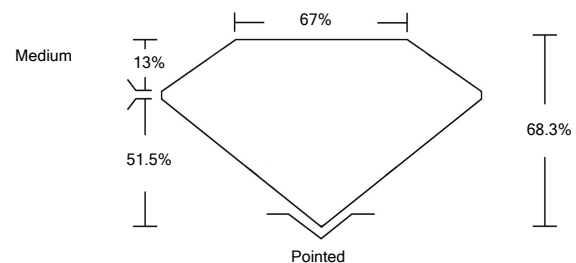


ELECTRONIC COPY

LABORATORY GROWN DIAMOND REPORT

LG529247639

PROPORTIONS



GRADING SCALES

COLOR GRADING SCALE	CL	NC	FT	VLT	LT	
	COLORLESS D-F	NEAR COLORLESS G-J	FAINT K-M	VERY LIGHT N-R	LIGHT S-Z	
CLARITY (10x) GRADING SCALE	FL	IF	VVS	VS	SI	I
	FLAWLESS INTERNALLY FLAWLESS	VERY VERY SLIGHTLY INCLUDED	VERY SLIGHTLY INCLUDED	SLIGHTLY INCLUDED	INCLUDED	

May 12, 2022

IGI Report Number

LG529247639

Description

**LABORATORY GROWN
DIAMOND**

Shape and Cutting Style

**CUT CORNERED
RECTANGULAR MODIFIED
BRILLIANT**

Measurements

8.14 X 6.15 X 4.20 MM

GRADING RESULTS

Carat Weight

1.85 CARAT

Color Grade

H

Clarity Grade

VS 1

May 12, 2022

IGI Report Number

LG529247639

Description

**LABORATORY GROWN
DIAMOND**

Shape and Cutting Style

**CUT CORNERED
RECTANGULAR MODIFIED
BRILLIANT**

Measurements

8.14 X 6.15 X 4.20 MM

GRADING RESULTS

Carat Weight

1.85 CARAT

Color Grade

H

Clarity Grade

VS 1

ADDITIONAL GRADING INFORMATION

Polish

EXCELLENT

Symmetry

EXCELLENT

Fluorescence

NONE

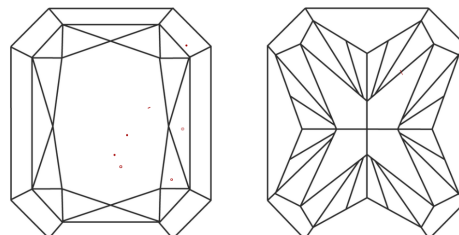
Inscription(s)

LABGROWN IGI LG529247639

Comments: This Laboratory Grown Diamond was created by Chemical Vapor Deposition (CVD) growth process and may include post-growth treatment.

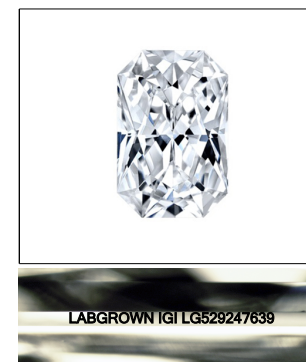
Type IIa

CLARITY CHARACTERISTICS



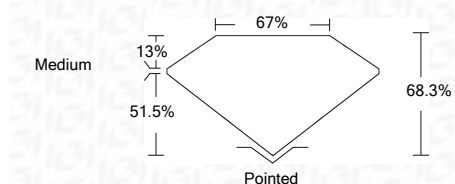
KEY TO SYMBOLS

Red symbols indicate internal characteristics.
Green symbols indicate external characteristics.



LASERSCRIBESM

Sample Image Used



ADDITIONAL GRADING INFORMATION

Polish

EXCELLENT

Symmetry

EXCELLENT

Fluorescence

NONE

Inscription(s)

LABGROWN IGI LG529247639

Comments: This Laboratory Grown Diamond was created by Chemical Vapor Deposition (CVD) growth process and may include post-growth treatment.
Type IIa



IGI

IGI Report No. LG529247639	1.85 CARAT	H	VS 1	68.3%	67%	Medium	Pointed	EXCELLENT	EXCELLENT	NONE	LABGROWN IGI LG529247639	Comments:	
May 12, 2022	CUT CORNERED RECT. MODIFIED BRILLIANT	8.14 X 6.15 X 4.20 MM	Color Grade	Clarity Grade	Depth	Table	Girdle	Culet	Polish	Symmetry	Fluorescence	Inscription(s)	This Laboratory Grown Diamond was created by Chemical Vapor Deposition (CVD) growth process and may include post-growth treatment. Type IIa