

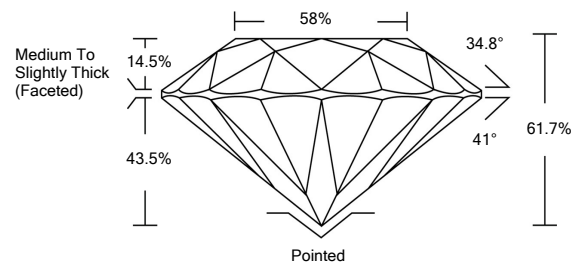


**ELECTRONIC COPY**

**LABORATORY GROWN DIAMOND REPORT**

LG529257526

**PROPORTIONS**



**GRADING SCALES**

COLOR GRADING SCALE	CL	NC	FT	VL	LT	
	COLORLESS D-F	NEAR COLORLESS G-J	FAINT K-M	VERY LIGHT N-R	LIGHT S-Z	
CLARITY (10x) GRADING SCALE	FL	IF	VVS	VS	SI	I
	FLAWLESS INTERNALLY FLAWLESS	VERY VERY SLIGHTLY INCLUDED	VERY SLIGHTLY INCLUDED	SLIGHTLY INCLUDED	INCLUDED	

May 13, 2022

IGI Report Number

**LG529257526**

Description

**LABORATORY GROWN  
DIAMOND**

Shape and Cutting Style

**ROUND BRILLIANT**

Measurements

**8.74 - 8.76 X 5.40 MM**

**GRADING RESULTS**

Carat Weight

**2.55 CARATS**

Color Grade

**D**

Clarity Grade

**VS 2**

Cut Grade

**IDEAL**

May 13, 2022

IGI Report Number

**LG529257526**

Description

**LABORATORY GROWN  
DIAMOND**

Shape and Cutting Style

**ROUND BRILLIANT**

Measurements

**8.74 - 8.76 X 5.40 MM**

**GRADING RESULTS**

Carat Weight

**2.55 CARATS**

Color Grade

**D**

Clarity Grade

**VS 2**

Cut Grade

**IDEAL**

**ADDITIONAL GRADING INFORMATION**

Polish

**EXCELLENT**

Symmetry

**EXCELLENT**

Fluorescence

**NONE**

Inscription(s)

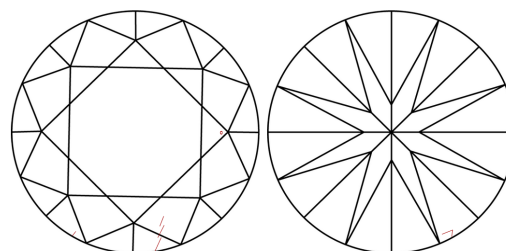
**LABGROWN IGI LG529257526**

Comments: As Grown - No indication of post-growth treatment.

This Laboratory Grown Diamond was created by High Pressure High Temperature (HPHT) growth process.

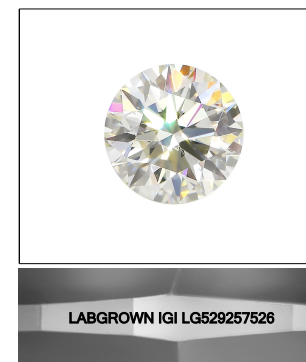
Type II

**CLARITY CHARACTERISTICS**



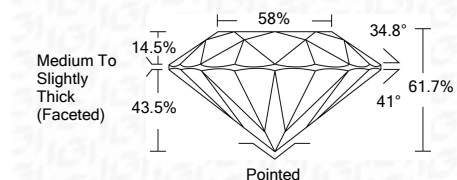
**KEY TO SYMBOLS**

Red symbols indicate internal characteristics.  
Green symbols indicate external characteristics.



**LASERSCRIBE<sup>SM</sup>**

Sample Image Used



**ADDITIONAL GRADING INFORMATION**

Polish

**EXCELLENT**

Symmetry

**EXCELLENT**

Fluorescence

**NONE**

Inscription(s)

**LABGROWN IGI LG529257526**

Comments: As Grown - No indication of post-growth treatment.

This Laboratory Grown Diamond was created by High Pressure High Temperature (HPHT) growth process.

Type II



**IGI**

May 13, 2022  
IGI Report No. LG529257526  
**ROUND BRILLIANT**

**8.74 - 8.76 X 5.40 MM**  
Carat Weight

**2.55 CARATS**

**D**  
Color Grade

**VS 2**  
Clarity Grade

**IDEAL**  
Cut Grade

**61.7%**  
Depth

**58%**  
Table

**Medium To Slightly Thick (Faceted)**  
Girdle

**Pointed**  
Culet

**EXCELLENT**  
Polish

**EXCELLENT**  
Symmetry

**NONE**  
Fluorescence

**LABGROWN IGI LG529257526**  
Inscription(s)

**As Grown - No indication of post-growth treatment.**  
Comments:  
This Laboratory Grown Diamond was created by High Pressure High Temperature (HPHT) growth process.  
Type II