



ELECTRONIC COPY

LABORATORY GROWN DIAMOND REPORT

May 16, 2022
 IGI Report Number **LG529257853**
 Description **LABORATORY GROWN
DIAMOND**
 Shape and Cutting Style **CUT CORNERED
RECTANGULAR MODIFIED
BRILLIANT**
 Measurements **8.58 X 5.84 X 3.95 MM**

GRADING RESULTS

Carat Weight **1.76 CARAT**
 Color Grade **H**
 Clarity Grade **VS 1**

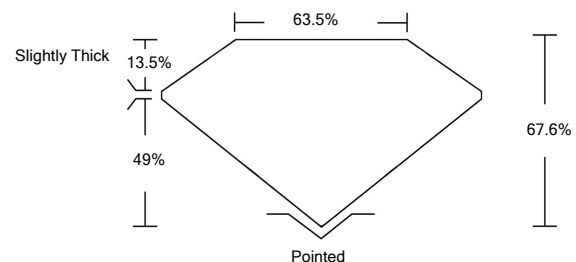
ADDITIONAL GRADING INFORMATION

Polish **EXCELLENT**
 Symmetry **EXCELLENT**
 Fluorescence **NONE**
 Inscription(s) **LABGROWN IGI LG529257853**

Comments: This Laboratory Grown Diamond was created by Chemical Vapor Deposition (CVD) growth process and may include post-growth treatment.
 Type IIa

LG529257853

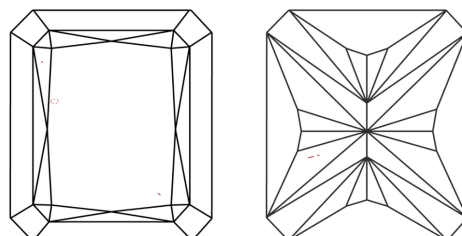
PROPORTIONS



GRADING SCALES

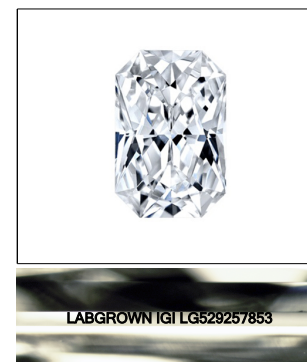
COLOR GRADING SCALE	CL	NC	FT	VL	LT	
	COLORLESS D-F	NEAR COLORLESS G-J	FAINT K-M	VERY LIGHT N-R	LIGHT S-Z	
CLARITY (10x) GRADING SCALE	FL	IF	VVS	VS	SI	I
	FLAWLESS INTERNALLY FLAWLESS	VERY VERY SLIGHTLY INCLUDED	VERY SLIGHTLY INCLUDED	SLIGHTLY INCLUDED	INCLUDED	

CLARITY CHARACTERISTICS



KEY TO SYMBOLS

Red symbols indicate internal characteristics.
 Green symbols indicate external characteristics.



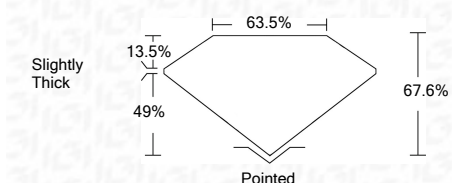
LASERSCRIBESM

Sample Image Used

May 16, 2022
 IGI Report Number **LG529257853**
 Description **LABORATORY GROWN
DIAMOND**
 Shape and Cutting Style **CUT CORNERED
RECTANGULAR MODIFIED
BRILLIANT**
 Measurements **8.58 X 5.84 X 3.95 MM**

GRADING RESULTS

Carat Weight **1.76 CARAT**
 Color Grade **H**
 Clarity Grade **VS 1**



ADDITIONAL GRADING INFORMATION

Polish **EXCELLENT**
 Symmetry **EXCELLENT**
 Fluorescence **NONE**
 Inscription(s) **LABGROWN IGI LG529257853**

Comments: This Laboratory Grown Diamond was created by Chemical Vapor Deposition (CVD) growth process and may include post-growth treatment.
 Type IIa



IGI



May 16, 2022
 IGI Report No. LG529257853
**CUT CORNERED RECT. MODIFIED
BRILLIANT**
 Dimensions: **8.58 X 5.84 X 3.95 MM**
 Carat Weight: **1.76 CARAT**
 Color Grade: **H**
 Clarity Grade: **VS 1**
 Depth: **67.6%**
 Table: **63.5%**
 Girdle: **Slightly Thick**
 Culet: **Pointed**
 Polish: **EXCELLENT**
 Symmetry: **EXCELLENT**
 Fluorescence: **NONE**
 Inscription(s): **LABGROWN IGI
LG529257853**
 Comments:
 This Laboratory Grown Diamond was created by Chemical Vapor Deposition (CVD) growth process and may include post-growth treatment.
 Type IIa