



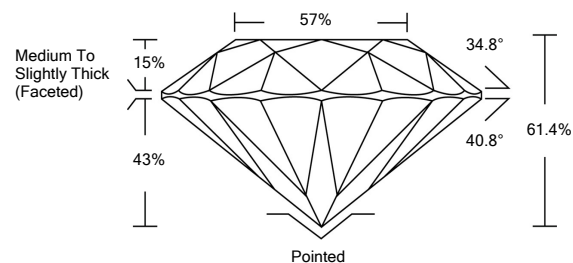
ELECTRONIC COPY

LG529259066

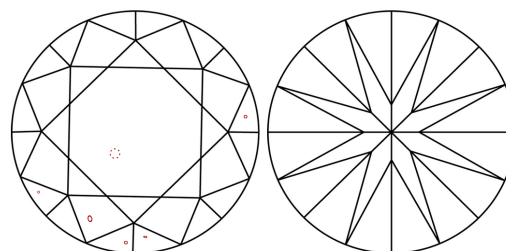
GRADING SCALES

COLOR GRADING SCALE	CL	NC	FT	VL	LT	
	COLORLESS D-F	NEAR COLORLESS G-J	FAINT K-M	VERY LIGHT N-R	LIGHT S-Z	
CLARITY (10x) GRADING SCALE	FL	IF	VVS	VS	SI	I
	FLAWLESS INTERNALLY FLAWLESS	VERY VERY SLIGHTLY INCLUDED	VERY SLIGHTLY INCLUDED	SLIGHTLY INCLUDED	INCLUDED	

PROPORTIONS

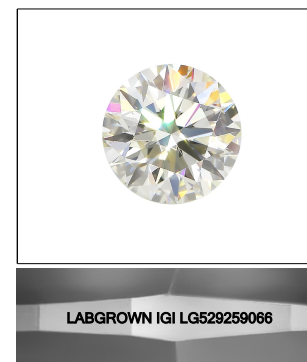


CLARITY CHARACTERISTICS



KEY TO SYMBOLS

Red symbols indicate internal characteristics. Green symbols indicate external characteristics.



LASERSCRIBESM

Sample Image Used

May 18, 2022

IGI Report Number

LG529259066

Description

LABORATORY GROWN DIAMOND

Shape and Cutting Style

ROUND BRILLIANT

Measurements

9.05 - 9.08 X 5.57 MM

GRADING RESULTS

Carat Weight

2.82 CARATS

Color Grade

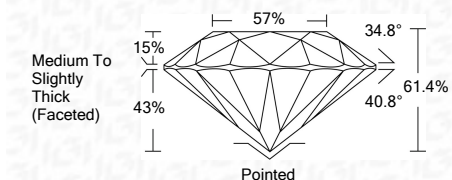
G

Clarity Grade

VS 2

Cut Grade

IDEAL



ADDITIONAL GRADING INFORMATION

Polish

EXCELLENT

Symmetry

EXCELLENT

Fluorescence

NONE

Inscription(s)

LABGROWN IGI LG529259066

Comments: This Laboratory Grown Diamond was created by Chemical Vapor Deposition (CVD) growth process and may include post-growth treatment. Type IIa



IGI

IGI Report No. LG529259066	2.82 CARATS	G	VS 2	IDEAL	61.4%	57%	Medium To Slightly Thick (Faceted)	Pointed	Polish	EXCELLENT
ROUND BRILLIANT									Symmetry	EXCELLENT
9.05 - 9.08 X 5.57 MM									Fluorescence	NONE
Carat Weight									Inscription(s)	LABGROWN IGI LG529259066
Color Grade									Comments:	This Laboratory Grown Diamond was created by Chemical Vapor Deposition (CVD) growth process and may include post-growth treatment. Type IIa
Clarity Grade										
Cut Grade										
Depth										
Table										
Girdle										
Culet										

